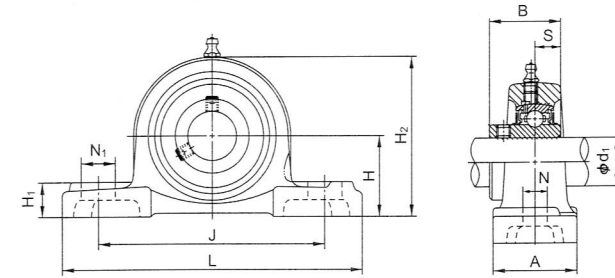
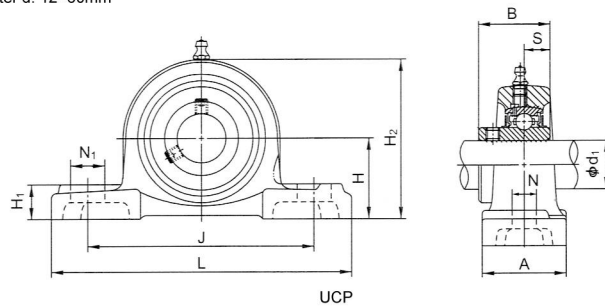


U-bearings with spherical outer ring

UBC produces various types of U-bearings with external spherical outer ring according different housing types, such as plumber block housings, diamond housings, round housings, sliding housings, annulus housings, take-up housings and Triangle housings, etc. Please contact UBC if you have specific request.

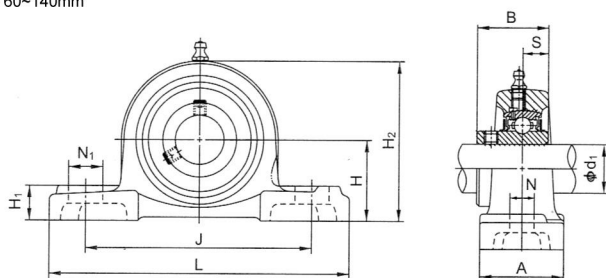
Bore diameter d: 12~60mm



d ₁ (mm)	Unit bearing assembly designation	Principal dimensions										Bolt designation
		H	L	A	J	N	N ₁	H ₁	H ₂	B	S	
12	UCP201	30.2	127	38	95	13	19	15	62	31	12.7	M10
15	UCP202	30.2	127	38	95	12	19	15	62	31	12.7	M10
17	UCP203	30.2	127	38	95	12	19	15	62	31	12.7	M10
20	UCP204	33.3	127	38	95	13	19	15	65	31	12.7	M10
25	UCP205	36.5	140	38	105	13	16	16	70	34	14.3	M10
	UCP305	45	175	45	132	17	20	16	84	38	15	M14
30	UCP206	42.9	165	48	121	17	21	18	83	38.1	15.9	M14
	UCP306	50	180	50	140	17	20	19	94	43	17	M14
35	UCP207	47.6	167	48	127	17	21	19	94	42.9	17.5	M14
	UCP307	56	210	56	160	17	25	21	105	48	19	M14
40	UCP208	49.2	184	54	137	17	25	19	100	49.2	19	M14
	UCP308	60	220	60	170	17	27	23	116	52	19	M14
45	UCP209	54	190	54	146	17	22	20	108	49.2	19	M14
	UCP309	67	245	67	190	20	30	25	128	57	22	M16
50	UCP210	57.2	206	60	159	20	25	22	114	51.6	19	M16
	UCP310	75	275	75	212	20	35	28	143	61	22	M16
55	UCP211	63.5	219	60	171	20	25	22	126	55.6	22.2	M16
	UCP311	80	210	80	236	20	38	31	154	66	25	M16
60	UCP212	69.8	241	70	184	20	25	25	138	65.1	25.4	M16
	UCP312	85	330	85	250	20	38	33	165	71	26	M20

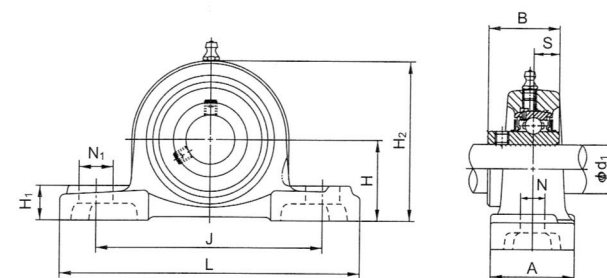
Designation	Bearings		Shell designation	Ref. Weight (kg)
	Dynamic Cr(N)	Static Cor(N)		
UC201	12800	6600	P203	0.62
UC202	12800	6600	P203	0.62
UC203	12800	6600	P203	0.62
UC204	12800	6600	P204	0.65
UC205	14000	7900	P205	0.79
UC305	21300	10900	P305	1.6
UC206	19600	11300	P206	1.3
UC306	26800	15000	P306	1.9
UC207	25900	15400	P207	1.6
UC307	33500	19200	P307	2.7
UC208	29300	17900	P208	2.0
UC308	40500	23900	P308	3.3
UC209	33000	20500	P209	2.3
UC309	51500	29500	P309	4.5
UC210	35500	23200	P210	2.7
UC310	61500	38200	P310	6.2
UC211	43000	29400	P211	3.3
UC311	71500	44800	P311	7.7
UC212	52500	36100	P212	4.7
UC312	81500	52000	P312	9.3

Bore diameter d: 60~140mm



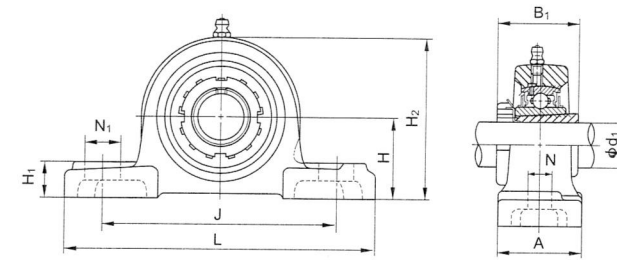
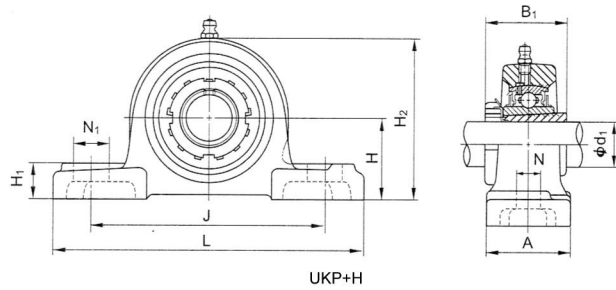
UCP

d ₁ (mm)	Unit bearing assembly designation	Principal dimensions										Bolt designation
		H	L	A	J	N	N ₁	H ₁	H ₂	B	S	
65	UCP213	76.2	265	70	203	25	29	27	150	65.1	25.4	M20
	UCP313	90	340	90	260	25	38	36	174	75	30	M20
70	UCP214	79.4	266	72	210	25	31	27	156	74.6	30.2	M20
	UCP314	95	360	90	280	27	40	40	186	78	33	M22
75	UCP215	82.6	275	74	217	25	31	28	163	77.8	33.3	M20
	UCP315	100	380	100	290	27	40	40	197	82	32	M22
80	UCP216	88.9	292	78	232	25	31	30	175	82.6	33.3	M20
	UCP316	106	400	110	300	27	40	45	209	86	34	M22
85	UCP217	95.2	310	83	247	25	31	32	187	85.7	34.1	M20
	UCP317	112	420	110	320	33	45	45	211	96	40	M27
90	UCP218	101.6	327	88	262	27	33	34	200	96	39.7	M22
	UCP318	118	430	110	330	33	45	50	233	96	40	M27
95	UCP319	125	470	120	360	36	50	50	250	103	41	M30
100	UCP320	140	490	120	380	36	50	55	275	108	42	M30
105	UCP321	140	490	120	380	36	50	55	278	112	44	M30
110	UCP322	150	520	140	400	40	55	60	295	117	46	M33
120	UCP324	160	570	140	450	40	55	70	321	126	51	M33
130	UCP326	180	600	140	480	40	55	80	354	135	54	M33
140	UCP328	200	620	140	500	40	55	80	388	145	59	M33



Designation	Bearings		Shell designation	Ref. Weight (kg)
	Dynamic Cr(N)	Static Cor(N)		
UC213	57500	40000	P213	5.6
UC313	92500	59700	P313	9.8
UC214	62000	44000	P214	7.3
UC314	104000	68000	P314	11.4
UC215	66000	48200	P215	7.9
UC315	114000	76900	P315	13.6
UC216	72500	53000	P216	10.0
UC316	123000	86400	P316	16.4
UC217	83500	61800	P217	12.2
UC317	132000	96500	P317	18.6
UC218	95500	71400	P218	14.7
UC318	143000	107200	P318	20.6
UC319	153000	118400	P319	26.5
UC320	173000	140400	P320	34.3
UC321	183000	153100	P321	36.6
UC322	205000	178800	P322	42.5
UC324	207000	184800	P324	53.5
UC326	229000	214300	P326	72.1
UC328	255000	246000	P328	89.1

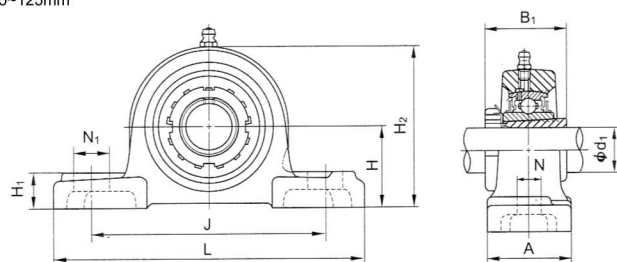
Bore diameter d: 20-60mm



d ₁ (mm)	Unit bearing assembly designation	Principal dimensions									Bolt designation
		H	L	A	J	N	N ₁	H ₁	H ₂	B ₁	
20	UKP205+H2305	36.5	140	38	105	13	16	16	70	35	M10
	UKP305+H2305	45	175	45	132	17	20	16	84	35	M14
25	UKP206+H2306	42.9	165	48	121	17	21	18	83	38	M14
	UKP306+H2306	50	180	50	140	17	20	19	94	38	M14
30	UKP207+H2307	47.6	167	48	127	17	21	19	94	43	M14
	UKP307+H2307	56	210	56	160	17	25	21	105	43	M14
35	UKP208+H2308	49.2	184	54	137	17	25	19	100	46	M14
	UKP308+H2308	60	220	60	170	17	27	23	116	46	M14
40	UKP208+H2309	54	190	54	146	17	22	20	108	50	M14
	UKP309+H2309	67	245	67	190	20	30	25	128	50	M16
45	UKP210+H2310	57.2	206	60	159	20	25	22	114	55	M16
	UKP310+H2310	75	275	75	212	20	35	28	143	55	M16
50	UKP211+H2311	63.5	219	60	171	20	25	22	126	59	M16
	UKP311+H2311	80	310	80	236	20	38	31	154	59	M16
55	UKP212+H2312	69.8	241	70	184	20	25	25	138	62	M16
	UKP312+H2312	85	330	85	250	25	38	33	165	62	M20
60	UKP213+H2313	76.2	265	70	203	25	29	27	150	65	M20
	UKP313+H2313	90	340	90	260	25	38	36	174	65	M20

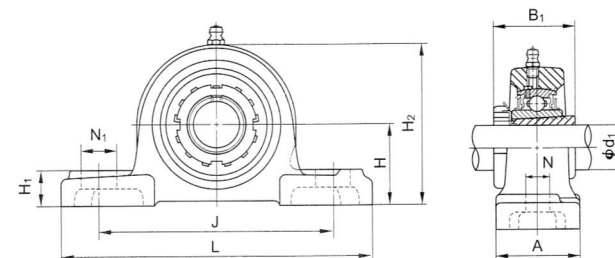
Designation	Bearings		Shell designation	Ref. Weight (kg)
	Dynamic Cr(N)	Static Cor(N)		
UK205+H2305	14000	7900	P205	0.84
UK305+H2305	21300	10900	P305	1.6
UK206+H2306	19600	11300	P206	1.4
UK306+H2306	26800	15000	P306	1.9
UK207+H2307	25900	15400	P207	1.6
UK307+H2307	33500	19200	P307	2.7
UK208+H2308	29300	17900	P208	2.1
UK308+H2308	40500	23900	P308	3.0
UK209+H2309	33000	20500	P209	2.4
UK309+H2309	51500	29500	P309	4.6
UK213+H2310	35500	23200	P210	2.8
UK310+H2310	61500	38200	P310	6.2
UK211+H2311	43000	29400	P211	3.4
UK311+H2311	71500	44800	P311	7.6
UK212+H2312	52500	36100	P212	4.8
UK312+H2312	81500	52000	P312	9.3
UK213+H2313	57500	40000	P213	5.7
UK313+H2313	92500	59700	P313	9.8

Bore diameter d: 65~125mm



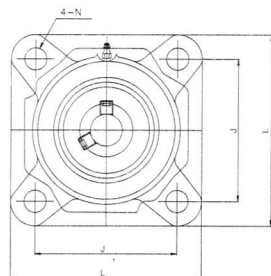
UKP+H

d ₁ (mm)	Unit bearing assembly designation	Principal dimensions									Bolt designation
		H	L	A	J	N	N ₁	H ₁	H ₂	B ₁	
65	UKP215+H2315	82.6	275	74	217	25	31	28	163	73	M20
	UKP315+H2315	100	380	100	290	27	40	40	197	73	M22
70	UKP216+H2316	88.9	292	78	232	25	31	30	175	78	M20
	UKP316+H2316	106	400	110	300	27	40	45	209	78	M22
75	UKP217+H2317	95.2	310	83	247	25	31	32	187	82	M20
	UKP317+H2317	112	420	110	320	33	45	45	221	82	M27
80	UKP218+H2318	101.6	327	88	262	27	33	34	200	86	M22
	UKP318+H2318	118	430	110	330	33	45	50	233	86	M27
85	UKP319+H2319	125	470	120	360	36	50	50	250	90	M30
90	UKP320+H2320	140	490	120	380	36	50	55	275	97	M30
100	UKP322+H2322	150	520	140	400	40	55	60	295	105	M33
110	UKP324+H2324	160	570	140	450	40	55	70	321	112	M33
115	UKP326+H2326	180	600	140	480	40	55	80	354	121	M33
125	UKP328+H2328	200	620	140	500	40	55	80	388	131	M33

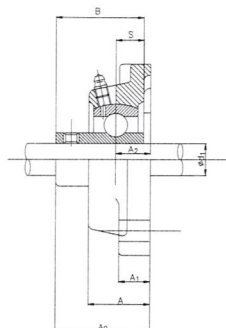


Designation	Bearings		Shell designation	Ref. Weight (kg)
	Dynamic Cr(N)	Static Cor(N)		
UK215+H2315	66000	48200	P215	8.3
UK315+H2315	114000	76900	P315	13.7
UK216+H2316	72500	53000	P216	10.4
UK316+H2316	123000	86400	P316	16.6
UK214+H2317	83500	61800	P217	12.8
UK317+H2317	132000	96500	P317	18.6
UK218+H2318	95500	71400	P218	15.1
UK318+H2318	143000	107200	P318	21.1
UK319+H2319	153000	118400	P319	26.5
UK320+H2320	173000	140400	P320	34.3
UK322+H2322	205000	178800	P322	42.6
UK324+H2324	207000	184800	P324	53.0
UK326+H2326	229000	214300	P326	72.4
UK328+H2328	255000	246000	P328	89.4

Bore diameter d: 12-60mm

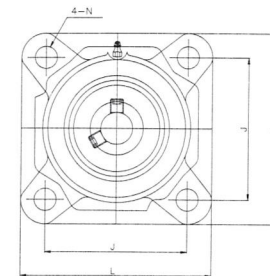


UCF

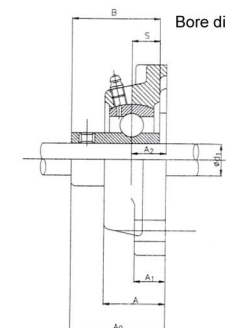


d ₁ (mm)	Unit bearing assembly designation	Principal dimensions										Bolt designation	Ball bearings			Shell designation	Ref. Weight (kg)
		L	A	J	N	A ₁	A ₂	A ₀	B	S	Bearing designation		Basic load rating				
													Dynamic Cr(N)	Static Cor(N)			
12	UCF201	86	25.5	64	12	12	15	33.3	31	12.7	M10	UC201	12800	6600	F204	0.64	
15	UCF202	86	25.5	64	12	12	15	33.3	31	12.7	M10	UC202	12800	6600	F204	0.62	
17	UCF203	86	25.5	64	12	12	15	33.3	31	12.7	M10	UC203	12800	6600	F204	0.61	
20	UCF204	86	25.5	64	12	12	15	33.3	31	12.7	M10	UC204	12800	6600	F204	0.59	
25	UCF205	95	27	70	12	14	16	35.7	34	14.3	M10	UC205	14000	7900	F205	0.82	
	UCF305	110	29	80	16	13	16	39	38	15	M14	UC305	21300	10900	F305	1.2	
30	UCF206	108	31	83	12	14	18	40.2	38.1	15.9	M10	UC206	19600	11300	F206	1.1	
	UCF306	125	32	95	16	15	18	44	43	17	M14	UC306	26800	15000	F306	1.7	
35	UCF207	117	34	92	14	16	19	44.4	42.9	17.5	M12	UC207	25900	15400	F207	1.5	
	UCF307	135	36	100	19	16	20	49	48	19	M16	UC307	33500	19200	F307	2.1	
40	UCF208	130	36	102	16	16	21	51.2	49.2	19	M14	UC208	29300	17900	F208	2.0	
	UCF308	150	40	112	19	17	23	56	52	19	M16	UC308	40500	23900	F307	2.9	
45	UCF209	137	38	105	16	18	22	52.2	49.2	19	M14	UC209	33000	20500	F209	2.4	
	UCF309	160	44	125	19	18	25	60	57	22	M16	UC309	51500	29500	F309	3.6	
50	UCF210	143	40	111	13	18	22	54.6	51.6	19	M14	UC210	35500	23200	F210	2.5	
	UCF310	175	48	132	23	19	28	67	61	22	M20	UC310	61500	38200	F310	4.7	
55	UCF211	162	43	130	19	20	25	58.4	55.6	22.2	M16	UC211	43000	29400	F211	3.4	
	UCF311	185	52	140	23	20	30	71	66	25	M20	UC311	71500	44800	F311	5.7	
60	UCF212	175	48	143	19	20	29	68.7	65.1	25.4	M16	UC212	52500	36100	F212	4.6	
	UCF312	195	56	150	23	22	33	78	71	26	M20	UC312	81500	52000	F312	6.8	

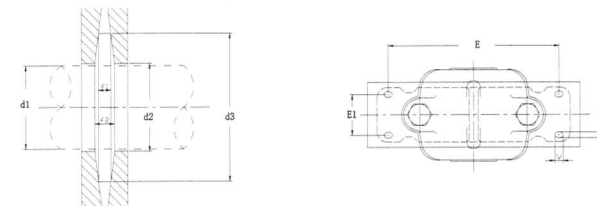
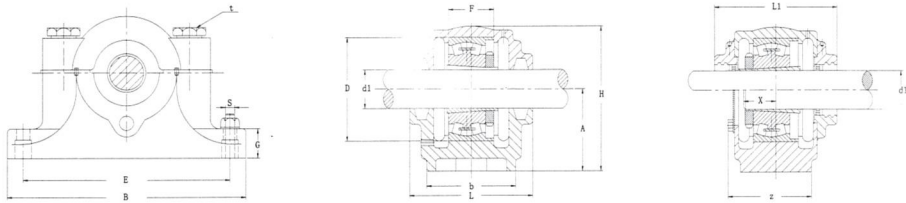
Bore diameter d: 65-140mm



UCF



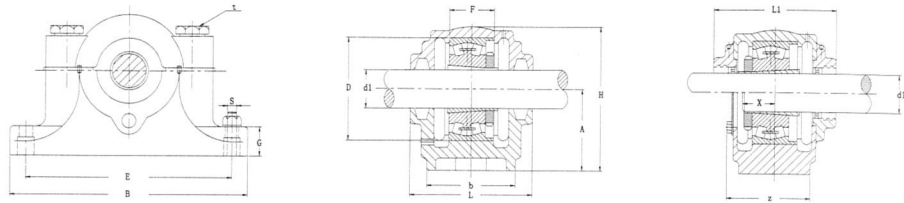
d ₁ (mm)	Unit bearing assembly designation	Principal dimensions										Bolt designation	Ball bearings			Shell designation	Ref. Weight (kg)
		L	A	J	N	A ₁	A ₂	A ₀	B	S	Bearing designation		Basic load rating				
													Dynamic Cr(N)	Static Cor(N)			
65	UCF213	187	50	149	19	20	30	69.7	65.1	25.4	M16	UC213	57500	40000	F213	5.5	
	UCF313	208	58	166	23	22	33	78	75	30	M20	UC313	92500	59700	F313	7.8	
70	UCF214	193	54	152	19	24	31	75.4	74.6	30.2	M16	UC214	62000	44000	F214	6.1	
	UCF314	226	61	178	25	25	36	81	78	33	M22	UC314	104000	68000	F314	9.6	
75	UCF215	200	56	159	19	24	34	78.5	77.8	33.3	M16	UC215	66000	48200	F215	6.9	
	UCF315	236	66	184	25	25	39	89	82	32	M22	UC315	114000	79600	F315	11.7	
80	UCF216	208	58	165	23	24	34	83.3	82.6	33.3	M20	UC216	72500	53000	F216	7.8	
	UCF316	250	68	196	31	27	38	90	86	34	M27	UC316	123000	86400	F316	13.7	
85	UCF217	220	63	175	23	26	36	87.6	85.7	34.1	M20	UC217	83500	61800	F217	9.3	
	UCF317	260	74	204	31	27	44	100	96	40	M27	UC317	132000	96500	F317	15.2	
90	UCF218	235	68	187	23	26	40	96.3	96	39.7	M20	UC218	95500	71400	F218	11.3	
	UCF318	280	76	216	35	30	44	100	96	40	M30	UC318	143000	107200	F318	18.8	
95	UCF319	290	94	228	35	30	59	121	103	41	M30	UC319	153000	118400	F319	20.7	
100	UCF320	310	94	242	38	32	59	125	108	42	M33	UC320	173000	140400	F320	24.8	
105	UCF321	310	94	242	38	32	59	127	112	44	M33	UC321	183000	153100	F321	25.6	
110	UCF322	340	96	266	41	35	60	131	117	46	M36	UC322	205000	178800	F322	34.7	
120	UCF324	370	110	290	41	40	65	140	126	51	M36	UC324	207000	184800	F324	47.2	
130	UCF326	410	115	320	41	45	65	146	135	54	M36	UC326	229000	214300	F326	62.7	
140	UCF328	450	125	350	41	55	75	161	145	59	M36	UC328	255000	246000	F328	87.0	



SN-SSN 500 series

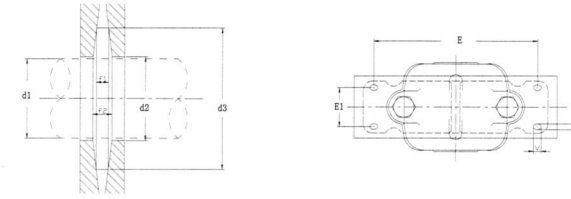
Type	shaft dimensions d1		Dimensions													d _{2H12} mm
	mm	in	D H8	B	b	G	F H13	A h13	L	H	E	E1	L1	X	Z	
SN 505	20	3/4	52	165	46	22	25	40	67	75	130	25	-	22	-	21.5
SN 506	25	1	62	185	52	22	30	50	77	90	150	25	-	22	-	26.5
SN 507	30	11/8	72	185	52	22	33	50	82	95	150	25	-	24	-	31.5
SN 508	35	11/4	80	205	60	25	33	60	85	110	170	30	-	26	-	365
SN SSN 509	40	11/2	85	205	60	25	31	60	85	112	170	30	-	28	-	41.5
SN SSN 510	45	13/4	90	205	60	25	33	60	90	115	170	30	-	28	-	46.5
SN SSN 511	50	2	100	255	70	28	33	70	95	130	210	35	160	30	54	51.5
SN SSN 512	55	21/8	110	255	70	30	38	70	105	135	210	35	172	32	62	56.5
SN SSN 513	60	21/4	120	275	80	30	43	80	110	150	230	40	172	36	62	62
SN SSN 515	65	21/2	130	280	80	30	41	80	115	155	230	40	182	38	68	67
SN SSN 516	70	23/4	140	315	90	32	43	95	120	175	260	50	184	40	68	72
SN SSN 517	75	3	150	320	90	32	46	95	125	185	260	50	184	42	70	77
SN SSN 518	80	31/4	160	345	100	35	62.4	100	145	195	290	50	204	50	81	82
SN SSN 519	85	-	170	345	100	35	53	112	140	210	290	50	-	-	-	87
SN SSN 520	90	31/2	180	380	110	40	70.3	112	160	218	320	60	224	54	90	92
SN SSN 522	100	4	200	410	120	45	80	125	175	240	350	70	232	60	92	102
SN SSN 524	110	41/4	215	410	120	45	86	140	185	270	350	70	248	64	95	113
SN SSN 526	115	41/2	230	445	130	50	90	150	190	290	380	70	268	64	100	118
SN SSN 529	125	5	250	500	150	50	98	150	205	305	420	80	286	70	108	128
SN SSN 530	135	51/4	270	530	160	60	106	160	220	325	450	90	304	76	113	138
SN SSN 532	140	51/2	290	550	160	60	114	170	235	345	470	90	320	80	122	143

d3 H12	dimensions										bearing designation		adapter sleeve		holding ring	
	t	f1 H13	f2	u	v	S		weight		self-aligning ball bearing	self-aligning roll ball bearings	metric	inch	type	amount	
						2 bolt	4 bolt	SN5	SSN5							
31	M8	3	4.2	15	20	M12	M8	1.5	2.3	1205K	-	H205	HE205	52x5	2	
										2205K	22205K	H305	HE305	52x7	1	
38	M8	4	5.4	15	20	M12	M10	1.74	2.8	1206K	-	H206	HE206	62x7	2	
										2206K	22206K	H306	HE306	62x10	1	
43	M10	4	5.4	15	20	M12	M10	1.9	3.2	1207K	-	H207	HE207	72x8	2	
										2207K	22207K	H307	HE307	72x10	1	
48	M10	4	5.4	15	20	M12	M10	2.63	3.2	1208K	-	H208	HE208	80x7.5	2	
										2208K	22208K	H308	HE308	80x10	1	
53	M10	4	5.4	15	20	M12	M10	2.64	3.7	1209K	-	H209	HE209	85x6	2	
										2209K	22209K	H309	HE309	85x8	1	
58	M10	4	5.4	15	20	M12	M10	2.8	3.8	1210K	-	H210	HE210	90x6.5	2	
										2210K	22210K	H310	HE310	90x10	1	
67	M12	5	6.9	18	23	M16	M12	4.32	6.2	1211K	-	H211	HE211	10x6	2	
										2211K	22211K	H311	HE311	10x08	1	
72	M12	5	6.9	18	23	M16	M12	4.99	6.5	1212K	-	H212	HE212	11x08	2	
										2212K	22212K	H312	HE312	110x10	1	
77	M12	5	6.8	18	23	M16	M12	5.64	8.3	1213K	-	H213	HE213	120x10	2	
										2213K	22213K	H313	HE313	120x12	1	
82	M12	5	6.8	18	23	M16	M12	6.19	9.0	1215K	-	H215	HE215	130x8	2	
										2215K	22215K	H315	HE315	130x10	1	
89	M16	6	8.1	22	27	M20	M12	8.17	12.1	1216K	-	H216	HE216	140x8.5	2	
										2216K	22216K	H316	HE316	140x10	1	
94	M16	6	8.1	22	27	M20	M12	9.37	12.2	1217K	-	H217	HE217	150x9	2	
										2217K	22217K	H317	HE317	150x10	1	
99	M16	6	8.1	22	27	M20	M16	11.5	15.2	1218K	-	H218	HE218	160x16.2	2	
										2218K	22218K	H318	HE318	160x11.2	2	
104	M16	6	8.1	22	28	M20	M16	13.5	17.7	1219K	-	H219	HE219	170x10.5	2	
										2219K	22219K	H319	HE319	170x10	1	
111	M20	7	9.3	26	32	M24	M16	16.3	20.5	2220K	22220K	H320	HE320	180x12.1	2	
										-	23220K	H2320	HE2320	180x10	1	
125	M20	8	10.8	26	32	M24	M16	25.1	29.2	2222K	22222K	H322	HE322	200x13.5	2	
										-	23222K	H2322	HE2322	200x10	1	
135	M20	8	10.7	26	34	M24	M16	27.2	33	2224K	22224K	H3124	HE3124	215x14	2	
										-	23224K	H2324	HE2324	215x10	1	
140	M24	8	10.7	28	35	M24	M20	35.2	40.9	22226K	22226K	H3126	HE3126	230x13	2	
										-	23226K	H2326	HE2326	230x10	1	
154	M24	9	12.2	34	44	M30	M24	43.7	48.6	22228K	22228K	H3128	HE3128	250x15	2	
										-	23228K	H2328	HE2328	250x10	1	
164	M24	9	12.2	34	42	M30	M24	45.3	56.2	22230K	22230K	H3130	HE3130	270x16.5	2	
										-	23230K	H2330	HE2330	270x10	1	
173	M24	10	13.7	32	44	M30	M24	50.75	68.5	22232K	22232K	H3132	HE3132	290x17	2	
										-	23232K	H2332	HE2332	290x10	1	

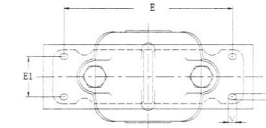
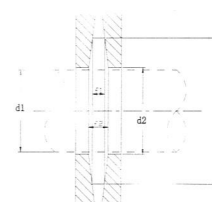
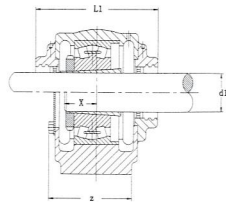
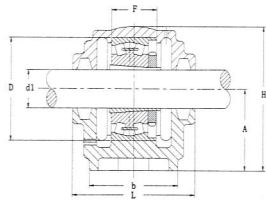
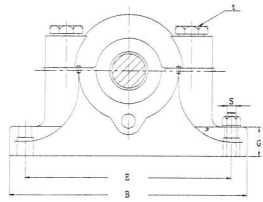


SN-SSN 600 series

Type	shaft dimensions d1		Dimensions													d _{2H12} mm
	mm	in	D	B	b	G	F	A	L	H	E	E1	L1	X	Z	
			H8				H13	h13								
SN 605	20	3/4	62	185	52	22	34	50	80	90	150	25	-	27	21.5	31
SN 606	25	1	72	185	52	22	37	50	82	95	150	25	-	27	26.5	38
SN 607	30	1 1/8	80	205	60	25	41	60	90	110	170	30	-	32	31.5	43
SN 608	35	1 1/4	90	205	60	25	43	60	95	115	170	30	-	34	36.5	48
SN SSN 609	40	1 1/2	100	255	70	28	46	70	105	130	210	35	-	36	41.5	53
SN SSN 610	45	1 3/4	110	255	70	30	50	70	115	135	210	35	-	39	46.5	58
SN SSN 611	50	2	120	275	80	30	53	80	120	150	230	40	185	40	51.5	67
SN SSN 612	55	2 1/8	130	280	80	30	56	80	125	155	230	40	185	44	56.5	72
SN SSN 613	60	2 1/4	140	315	90	32	58	95	130	175	260	50	200	46	62	77
SN SSN 615	65	2 1/2	160	345	100	35	65	100	140	195	290	50	210	51	67	82
SN SSN 616	70	2 3/4	170	345	100	35	68	112	145	212	290	50	210	52	72	89
SN SSN 617	75	3	180	380	110	40	70	112	155	218	320	60	220	56	77	94
SN SSN 618	80	3 1/4	190	400	110	33	74	112	160	230	335	60	225	58	82	99
SN SSN 619	85	-	200	420	120	36	77	125	170	245	350	70	235	60	87	104
SN SSN 620	90	3 1/2	215	420	120	38	83	140	175	280	350	70	240	64	92	111
SN SSN 622	100	4	240	460	130	40	90	150	190	300	390	70	258	69	102	125
SN SSN 624	110	4 1/4	260	540	160	50	96	160	205	325	450	90	280	73	113	135
SN SSN 626	115	4 1/2	280	560	160	50	103	170	215	350	470	90	300	77	118	140
SN SSN 629	125	5	300	630	170	55	112	180	235	375	520	90	320	83	128	154
SN SSN 630	135	5 1/4	320	680	180	55	118	190	245	395	560	90	340	88	138	164
SN SSN 632	140	5 1/2	340	710	190	60	124	200	255	415	580	100	350	93	143	173



d3 H12	dimensions								bearing designation				adapter sleeve		holding ring	
	t	f1 H13	f2	u	v	S		weight		self-aligning ball bearing	self-aligning roll ball bearings	metric	inch	type	amount	
						2 bolt	4 bolt	SN5	SSN6							
31	M8	3	4.2	15	20	M12	M8	1.5	2.3	1205K 2205K	- 22205K	H205 H305	HE205 HE305	52x5 52x7	2 1	
38	M8	4	5.4	15	20	M12	M10	1.74	2.8	1206K 2206K	- 22206K	H206 H306	HE206 HE306	62x7 62x10	2 1	
43	M10	4	5.4	15	20	M12	M10	1.9	3.2	1207K 2207K	- 22207K	H207 H307	HE207 HE307	72x8 72x10	2 1	
48	M10	4	5.4	15	20	M12	M10	2.63	3.2	1208K 2208K	- 22208K	H208 H308	HE208 HE308	80x75 80x10	2 1	
53	M10	4	5.4	15	20	M12	M10	2.64	3.7	1209K 2209K	- 22209K	H209 H309	HE209 HE309	85x6 85x8	2 1	
58	M10	4	5.4	15	20	M12	M10	2.8	3.8	1210K 2210K	- 22210K	H210 H310	HE210 HE310	90x65 90x10	2 1	
67	M12	5	6.9	18	23	M16	M12	4.32	6.2	1211K 2211K	- 22211K	H211 H311	HE211 HE311	10x06 10x08	2 1	
72	M12	5	6.9	18	23	M16	M12	4.99	6.5	1212K 2212K	- 22212K	H212 H312	HE212 HE312	11x08 110x10	2 1	
77	M12	5	6.8	18	23	M16	M12	5.64	8.3	1213K 2213K	- 22213K	H213 H313	HE213 HE313	120x10 120x12	2 1	
82	M12	5	6.8	18	23	M16	M12	6.19	9.0	1215K 2215K	- 22215K	H215 H315	HE215 HE315	130x8 130x10	2 1	
89	M16	6	8.1	22	27	M20	M12	8.17	12.1	1216K 2216K	- 22216K	H216 H316	HE216 HE316	140x8.5 140x10	2 1	
94	M16	6	8.1	22	27	M20	M12	9.37	12.2	1217K 2217K	- 22217K	H217 H317	HE217 HE317	150x9 150x10	2 1	
99	M16	6	8.1	22	27	M20	M16	11.5	15.2	1218K 2218K	- 22218K	H218 H318	HE218 HE318	160x16.2 160x11.2	2 2	
104	M16	6	8.1	22	28	M20	M16	13.5	17.7	1219K 2219K	- 22219K	H219 H319	HE219 HE319	170x10.5 170x10	2 1	
111	M20	7	9.3	26	32	M24	M16	16.3	20.5	2220K 2320K	- 22220K	H320 H2320	HE320 HE2320	180x12.1 180x10	2 1	
125	M20	8	10.8	26	32	M24	M16	25.1	29.2	2222K 2322K	- 22222K	H322 H2322	HE322 HE2322	200x13.5 200x10	2 1	
135	M20	8	10.7	26	34	M24	M16	27.2	33	2224K 2324K	- 22224K	H3124 H2324	HE3124 HE2324	215x14 215x10	2 1	
140	M24	8	10.7	28	35	M24	M20	35.2	40.9	2226K 2326K	- 22226K	H3126 H2326	HE3126 HE2326	230x13 230x10	2 1	
154	M24	9	12.2	34	44	M30	M24	43.7	48.6	2228K 2328K	- 22228K	H3128 H2328	HE3128 HE2328	250x15 250x10	2 1	
164	M24	9	12.2	34	42	M30	M24	45.3	56.2	2230K 2320K	- 22230K	H3130 H2330	HE3130 HE2330	270x16.5 270x10	2 1	
173	M24	10	13.7	32	44	M30	M24	50.75	68.5	2232K 2323K	- 22232K	H3132 H2332	HE3132 HE2332	290x17 290x10	2 1	



SN-SSNZ 200 series

Type	shaft dimension			Dimensions													locknut	mounting lock washer	ZF seal		holding ring	
	d	d1	d2	D H8	B	b	G	F H13	A h13	L	H	E	bolt	self-aligning ball bearing	self-aligning roll bearings	d1			d2	type	amount	
SNZ 205	25	20	30	52	165	46	22	25	40	67	75	130	M12	1205 2205	- 22205	AN05	AW05	ZF5	ZF7	52x5 52x7	2 1	
SNZ 206	30	25	35	65	185	52	22	30	50	77	90	150	M12	1206 2206	- 22206	AN06	AW06	ZF6	ZF8	62x7 62x10	2 1	
SNZ 207	35	30	45	72	185	52	22	33	50	82	95	150	M12	1207 2207	- 22207	AN07	AW07	ZF7	ZF10	72x8 72x10	2 1	
SNZ 208	40	35	50	80	205	60	25	33	60	85	110	170	M12	1208 2208	- 22208	AN08	AW08	ZF8	ZF11	80x7.5 80x10	2 1	
SNZ SSNZ 209	45	40	55	85	205	60	25	31	60	85	112	170	M12	1209 2209	- 22209	AN09	AW09	ZF9	ZF12	85x6 85x8	2 1	
SNZ SSNZ 210	50	45	60	90	205	60	25	33	60	90	115	170	M12	1210 2210	- 22210	AN10	AW10	ZF10	ZF13	90x6.5 90x10	2 1	
SNZ SSNZ 211	55	50	65	100	255	70	28	33	70	95	130	210	M16	1211 2211	- 22211	AN11	AW11	ZF11	ZF15	10x06 10x08	2 1	
SNZ SSNZ 212	60	55	70	110	255	70	30	38	70	105	135	210	M16	1212 2212	- 22212	AN12	AW12	ZF12	ZF16	11x08 110x10	2 1	
SNZ SSNZ 213	65	60	75	120	275	80	30	43	80	110	150	230	M16	1213 2213	- 22213	AN13	AW13	ZF13	ZF17	120x10 120x12	2 1	
SNZ SSNZ 214	70	60	80	125	275	80	30	44	80	115	155	230	M16	1214 2214	- 22214	AN14	AW14	ZF14	ZF18	125x10 125x13	2 1	
SNZ SSNZ 215	75	65	85	130	280	80	30	41	80	115	155	230	M16	1215 2215	- 22215	AN15	AW15	ZF15	ZF19	130x8 130x10	2 1	
SNZ SSNZ 216	80	70	90	140	315	90	32	43	95	120	175	260	M20	1216 2216	- 22216	AN16	AW16	ZF16	ZF20	140x8.5 140x10	2 1	
SNZ SSNZ 217	85	75	95	150	320	90	32	46	95	125	185	260	M20	1217 2217	- 22217	AN17	AW17	ZF17	ZF21	150x9 150x10	2 1	
SNZ SSNZ 218	90	80	100	160	345	100	35	52.4	100	145	195	290	M20	1218 2218	22218 23218	AN18	AW18	ZF18	ZF22	160x16.2 160x11.2 160x10	2 1 1	
SNZ SSNZ 219	95	85	110	170	345	100	35	53	112	140	210	290	M20	1219 2219	- 22219	AN19	AW19	ZF19	ZF24	170x10.5 170x10	2 1	
SNZ SSNZ 220	100	90	115	180	380	110	40	70.3	112	160	218	320	M24	2220 23220	- 23220	AN20	AW20	ZF20	ZF26	180x12.1 180x10	2 1	
SNZ SSNZ 222	110	100	125	200	410	120	45	80	125	175	240	350	M24	2222 23222	- 23222	AN22	AW22	ZF22	ZF28	200x13.5 200x10	2 1	
SNZ SSNZ 224	120	110	135	215	410	120	45	86	140	185	270	350	M24	2224 23224	- 23224	AN24	AW24	ZF24	ZF30	215x14 215x10	2 1	
SNZ SSNZ 226	130	115	145	230	445	130	50	90	150	190	290	380	M24	2226 23226	- 23226	AN26	AW26	ZF26	ZF33	230x13 230x10	2 1	
SNZ SSNZ 229	140	125	155	250	500	150	50	98	150	205	305	420	M30	2228 23228	- 23228	AN28	AW28	ZF28	ZF35	250x15 250x10	2 1	
SNZ SSNZ 230	150	135	165	270	530	160	60	106	160	220	325	450	M30	2230 23230	- 23230	AN30	AW30	ZF30	ZF37	270x16.5 270x10	2 1	
SNZ SSNZ 232	160	140	175	290	550	160	60	114	170	235	345	470	M30	2232 23232	- 23232	AN32	AW32	ZF32	ZF39	290x17 290x10	2 1	

Type	shaft dimension			Dimensions													locknut	mounting lock washer	ZF seal		holding ring	
	d	d1	d2	D H8	B	b	G	F H13	A h13	L	H	E	bolt	self-aligning ball bearing	self-aligning roll bearings	d1			d2	type	amount	
SNZ 305	25	20	30	60	185	52	22	34	50	80	90	150	M12	1305 2305	- -	AN05	AW05	ZF5	ZF7	62x8.5 62x10	2 1	
SNZ 306	30	25	35	72	185	52	22	37	50	82	95	150	M12	1306 2306	- -	AN06	AW06	ZF6	ZF8	72x9 72x10	2 1	
SNZ 307	35	30	45	80	205	60	25	41	60	90	110	170	M12	1307 2307	- -	AN07	AW07	ZF7	ZF10	80x10 80x10	2 1	
SNZ 308	40	35	50	90	205	60	25	43	60	95	115	170	M12	1308 2308	21308 22308	AN08	AW08	ZF8	ZF11	90x10 90x10	2 1	
SNZ SSNZ 309	45	40	55	100	255	70	28	46	70	105	130	210	M16	1309 2309	21309 22309	AN09	AW09	ZF9	ZF12	100x10.5 100x10	2 1	
SNZ SSNZ 310	50	45	60	110	255	70	30	50	70	115	135	210	M16	1310 2310	21310 22310	AN10	AW10	ZF10	ZF13	110x11.5 110x10	2 1	
SNZ SSNZ 311	55	50	65	120	275	80	30	53	80	120	150	230	M16	1311 2311	21311 22311	AN11	AW11	ZF11	ZF15	120x12 120x10	2 1	
SNZ SSNZ 312	60	55	70	130	280	80	30	56	80	125	155	230	M16	1312 2312	21312 22312	AN12	AW12	ZF12	ZF16	130x12.5 130x10	2 1	
SNZ SSNZ 313	65	60	75	140	315	90	32	58	95	130	175	260	M20	1313 2313	21313 22313	AN13	AW13	ZF13	ZF17	140x12.5 140x10	2 1	
SNZ SSNZ 314	70	60	80	150	320	90	32	61	95	130	185	262	M20	1314 2314	21314 22314	AN14	AW14	ZF14	ZF18	150x13 150x10	2 1	
SNZ SSNZ 315	75	65	85	160	345	100	35	65	100	140	195	290	M20	1315 2315	21315 22315	AN15	AW15	ZF15	ZF19	160x14 160x10	2 1	
SNZ SSNZ 316	80	70	90	170	345	100	35	68	112	145	212	290	M20	1316 2316	21316 22316	AN16	AW16	ZF16	ZF20	170x14.5 170x10	2 1	
SNZ SSNZ 317	85	75	95	180	380	110	40	70	112	155	218	320	M24	1317 2317	21317 22317	AN17	AW17	ZF17	ZF21	180x14.5 180x10	2 1	
SNZ SSNZ 318	90	80	100	190	400	110	33	74	112	160	230	320	M24	1318 2318	21318 22318	AN18	AW18	ZF18	ZF22	190x15.5 190x10	2 1	
SNZ SSNZ 319	95	85	110	200	420	120	36	77	125	170	245	350	M24	1319 2319	21319 22319	AN19	AW19	ZF19	ZF24	200x16 200x10	2 1	
SNZ SSNZ 320	100	90	115	215	420	120	38	83	140	175	280	350	M24	1320 2320	21320 22320	AN20	AW20	ZF20	ZF26	215x18 215x10	2 1	
SNZ SSNZ 322	110	100	125	245	460	130	40	90	150	190	300	390	M24	-	22322	AN22	AW22	ZF22	ZF28	240x20 240x10	2 1	
SNZ SSNZ 324	120	110	135	260	540	160	50	96	160	205	325	450	M30	-	22324	AN24	AW24	ZF24	ZF30	260x10	1	
SNZ SSNZ 326	130	115	150	280	560	160	50	103	170	215	350	470	M30	-	22326	AN26	AW26	ZF26	ZF34	280x10	1	
SNZ SSNZ 329	140	125	160	300	630	170	55	112	180	235	375	520	M30	-	22328	AN28	AW28	ZF28	ZF36	300x10	1	
SNZ SSNZ 330	150	135	170	320	680	180	55	118	190	245	395	560	M30	-	22330	AN30	AW30	ZF30	ZF38	320x10	1	
SNZ SSNZ 332	160	140	180	340	710	190	60	124	200	255	415	580	M36	-	22332	AN32	AW32	ZF32	ZF40	340x10	1	