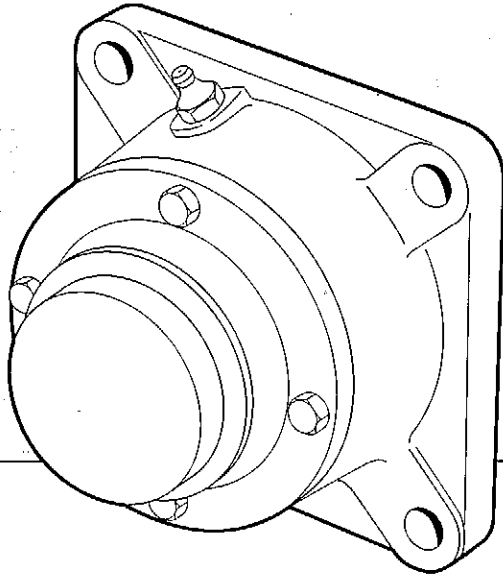


# 7225(00) flanged housings

Extracted from SKF Catalogue 4005E



## Data summary:

- Flanged housings.
- Suitable for self-aligning ball bearings and spherical roller bearings.
- Shaft diameter range 20–100 mm.
- Adapter sleeve mounting.
- Grease lubrication. Suitable for relubrication.
- High-grade grey cast iron.
- Felt seals.

Flanged housings of series 7225(00) are intended for use with self-aligning ball bearings of series 12 K and 22 K and spherical roller bearings of series 222 K on adapter sleeves. They are available for shaft diameters from 20 to 100 mm. The housings are produced in two designs depending on size. The smaller sizes up to and including size 13 are triangular and the larger sizes have a square form. The bearing seating in the housing is designed for non-locating bearing arrangements. Locating bearing arrangements can be obtained by inserting locating rings between the bearing outer ring and the housing shoulder.

## Materials

The flanged housings are manufactured in grey cast iron.

## Permissible load

For flanged housings, the permissible radial loads are dependent on the bearings or the attachment bolts used. If heavy loads are expected, additional supports are recommended to relieve the attachment bolts of the load.

Where axial loads are concerned the direction of the loads is the determining factor. If the load acts towards the flange, the axial load carrying capacity of the bearing is the deciding factor, whereas if the loads act in the opposite direction the permissible loads on the cover bolts are

the limiting factor. The standard bolts supplied with these housings are grade 5.8.

## Seals

The housings are equipped with felt seals.

For shaft ends, the housings are supplied with an end cover (A). The housings for through shafts carry the designation B.

## Lubrication

The 7225(00) housings are designed for grease lubrication. They can be relubricated via a grease nipple. The recommended initial grease fill for each housing is shown in the housing tables.

## 7225(00) flanged housings

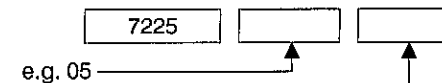
### Designation system

The designations of the housings are made up of the basic designation denoting the basic design, material and size plus supplementary designations covering design variants.

### Basic designation

Basic design:

Size designation:



### Supplementary designations

Triangular housing for shaft diameter range 20–60 mm

D

Square-shaped housing for shaft diameter range 65–100 mm

No symbol

Housing for shaft end, with end cover

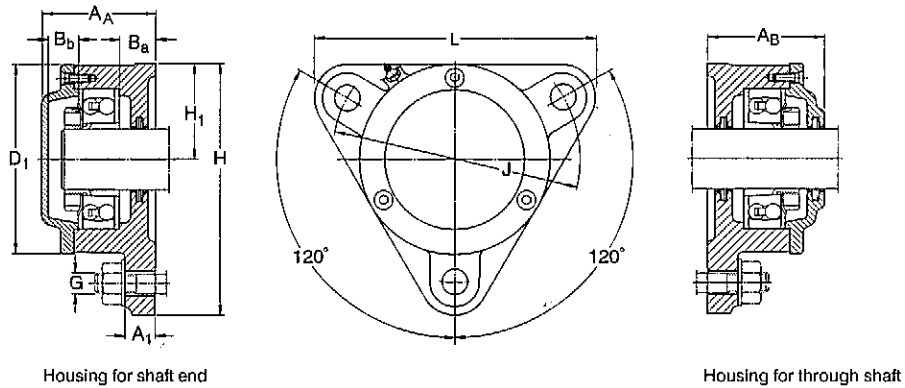
A

Housing for through shaft

B

For combinations the symbols are written in the same order as presented above.

**7225(00) flanged housings  
for bearings with adapter sleeve**  
d<sub>a</sub> 20–60 mm



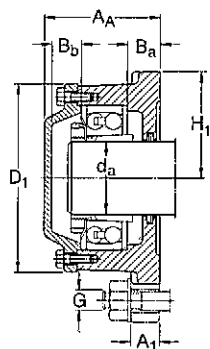
Shaft diameter d <sub>a</sub>	Housing Dimensions												Mass	Designation	
	A <sub>A</sub>	A <sub>B</sub>	A <sub>1</sub>	B <sub>a</sub>	B <sub>b</sub>	D <sub>1</sub>	H	H <sub>1</sub>	J	L	G	Housing of grey cast iron for shaft end		Housing for through shaft	
mm	mm												kg	-	
20	51,5	56,5	10	15	12,5	75	100	38	96	110	10	1,10	<b>722505 DA</b>	<b>722505 DB</b>	
25	57	59,5	12	16	15	86	117	44	116	130	10	1,50	<b>722506 DA</b>	<b>722506 DB</b>	
30	59,5	63,5	12	16	14,5	97	130	48,5	130	145	12	1,80	<b>722507 DA</b>	<b>722507 DB</b>	
35	64	65,5	12	17	18	108	143	54	140	160	12	2,30	<b>722508 DA</b>	<b>722508 DB</b>	
40	64,5	69,5	12	19	16,5	113	160	60	160	180	12	3,00	<b>722509 DA</b>	<b>722509 DB</b>	
45	68,5	73	15	22	17,5	118	160	60	160	180	12	3,00	<b>722510 DA</b>	<b>722510 DB</b>	
50	75,5	81,5	15	24	19,5	128	172	65	170	192	12	4,10	<b>722511 DA</b>	<b>722511 DB</b>	
55	77	82	15	23	19	142	189	72	180	210	12	4,80	<b>722512 DA</b>	<b>722512 DB</b>	
60	80	86	15	22	20	152	203	78	190	225	12	5,90	<b>722513 DA</b>	<b>722513 DB</b>	

Shaft diameter d <sub>a</sub>	Appropriate bearing	adapter sleeve	locating ring/ spacing washer No. and designation	Separate components Felt strip <sup>1)</sup>	End cover bolts (3 bolts)	Grease quantity Initial fill
mm	-	-	-	-	-	kg
20	1205 EK	H 205	1 FRB 5/52	FS 110	M 5 × 16	0,015
	2205 EK	H 305	1 ZW 42 × 52			
25	1206 EK	H 206	1 FRB 6/62	FS 190	M 5 × 16	0,025
	2206 EK	H 306	1 ZW 50 × 62			
30	1207 EK	H 207	1 FRB 8/72	FS 190	M 5 × 16	0,035
	2207 EK	H 307	1 ZW 65 × 72			
	22207 CCK	H 307	1 ZW 65 × 72			
35	1208 EK	H 208	1 FRB 7/80	FS 190	M 5 × 16	0,045
	2208 EK	H 308	1 ZW 70 × 80			
	22208 EK	H 308	1 ZW 70 × 80			
40	1209 EK	H 209	1 FRB 6/85	FS 190	M 6 × 20	0,050
	2209 EK	H 309	1 ZW 75 × 85			
	22209 CCK	H 309	1 ZW 75 × 85			
45	1210 EK	H 210	1 FRB 5/90	FS 190	M 6 × 20	0,050
	2210 EK	H 310	1 ZW 80 × 90			
	22210 CCK	H 310	1 ZW 80 × 90			
50	1211 EK	H 211	1 FRB 6/100	FS 260	M 6 × 20	0,060
	2211 EK	H 311	1 ZW 85 × 100			
	22211 EK	H 311	1 ZW 85 × 100			
55	1212 EK	H 212	1 FRB 8/110	FS 260	M 6 × 20	0,090
	2212 EK	H 312	1 ZW 90 × 110			
	22212 EK	H 312	1 ZW 90 × 110			
60	1213 EK	H 213	1 FRB 10/120	FS 260	M 6 × 20	0,12
	2213 EK	H 313	1 FRB 2/120			
	22213 CCK	H 313	1 FRB 2/120			

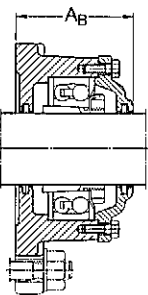
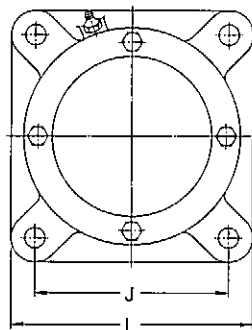
<sup>1)</sup> One felt strip is supplied with type A and two with type B housings

**7225(00) flanged housings  
for bearings with adapter sleeve**

$d_a$  65–100 mm



Housing for shaft end

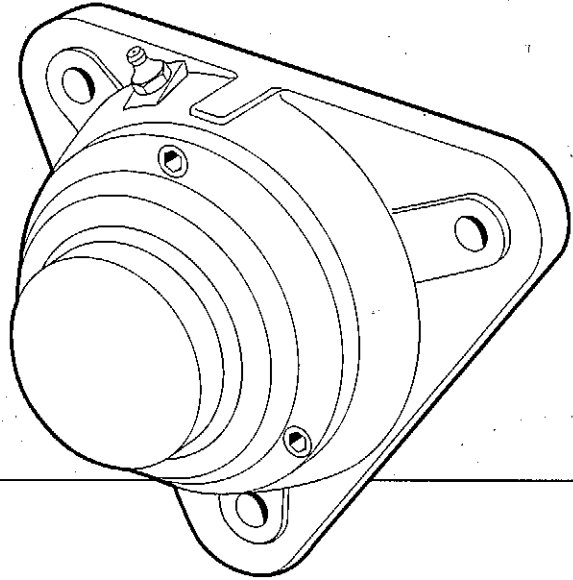


Housing for through shaft

Shaft diameter $d_a$	Housing Dimensions			$B_a$	$B_b$	$D_1$	$H_1$	J	L	G	Mass kg	Designation	
	$A_A$	$A_B$	$A_1$									Housing of grey cast iron for shaft end	Housing of grey cast iron for through shaft
65	104	104	25	30	27	168	95	152	190	16	9,40	722515 A	722515 B
70	110	110	25	31	30	176	98	152	196	16	9,80	722516 A	722516 B
75	114	114	25	31	30	188	105	170	210	16	11,5	722517 A	722517 B
80	118	118	25	30	31	198	105	170	210	16	12,5	722518 A	722518 B
90	127	127	30	30	33	224	125	198	250	20	18,0	722520 A	722520 B
100	137	137	30	30	38	246	135	219	270	20	21,5	722522 A	722522 B

Shaft diameter $d_a$	Appropriate bearing	adapter sleeve	locating ring No. and designation	Separate components Felt strip <sup>1)</sup>	End cover bolts (4 bolts)	Grease quantity Initial fill
65	1215 K 2215 K 22215 EK	H 215 H 315 H 315	2 FRB 8/130 1 FRB 10/130 1 FRB 10/130	FS 260	M 8 × 25	0,25
70	1216 K 2216 EK 22216 EK	H 216 H 316 H 316	2 FRB 8.5/140 1 FRB 10/140 1 FRB 10/140	FS 330	M 8 × 25	0,30
75	1217 K 2217 K 22217 EK	H 217 H 317 H 317	2 FRB 9/150 1 FRB 10/150 1 FRB 10/150	FS 330	M 8 × 25	0,35
80	1218 K 2218 K 22218 EK	H 218 H 318 H 318	2 FRB 10/160 1 FRB 10/160 1 FRB 10/160	FS 330	M 8 × 25	0,40
90	1220 K 2220 K 22220 EK	H 220 H 320 H 320	1 FRB 10/180 1 FRB 12/180 1 FRB 10/180 1 FRB 10/180	FS 370	M 10 × 30	0,50
100	1222 K 2222 K 22222 EK	H 222 H 322 H 322	2 FRB 12.5/200 1 FRB 10/200 1 FRB 10/200	FS 460	M 10 × 30	0,65

<sup>1)</sup> One felt strip is supplied with type A and two with type B housings



**Data summary:**

- Flanged housings.
- Suitable for self-aligning ball bearings with extended inner rings.
- Shaft diameter range 20–60 mm.
- Direct mounting (grub screw).
- Grease lubrication. Suitable for relubrication.
- High-grade grey cast iron.
- Felt seals.

# I-1200(00) flanged housings

Flanged housings of series I-1200(00) are designed to take self-aligning ball bearings with extended inner ring. They are normally used in simple applications where commercial ground shafting or bright drawn bar is used.

The outer ring of the bearing cannot be axially displaced in the housing seating bore. A self-aligning ball bearing with an extended inner ring is located axially by a pin or shouldered screw which engages in a slot at one side of the inner ring. The pin or shouldered screw which is fitted in the shaft also prevents the inner ring from "creeping" on the shaft. To prevent other components on the shaft from rubbing against the housing cover, the inner ring extends 1 mm beyond the cover.

**Materials**

The flanged housings are manufactured in grey cast iron.

**Permissible load**

For flanged housings, the permissible radial load is dependent on the bearing incorporated or the attachment bolts used. If heavy loads are expected, additional

supports are recommended to relieve the attachment bolts of the loads.

Where axial loads are concerned the direction of the loads is the determining factor. If the loads act towards the flange, the axial load carrying capacity of the bearing is the deciding factor, whereas if the loads act in the opposite direction the permissible loads on the cover bolts is the limiting factor. The standard bolts supplied with these housings are of grade 5.8.

**Seals**

I-1200(00) housings are equipped with felt seals.

**Lubrication**

I-1200(00) housings are designed for grease lubrication. They can be relubricated via a grease nipple. The recommended initial grease fill for each housing is shown in the housing tables.

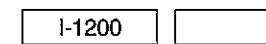
**Designation system**

The designations of the housings are made up of the basic designation denoting the basic design, material and size.

**Basic designation**

Basic design:

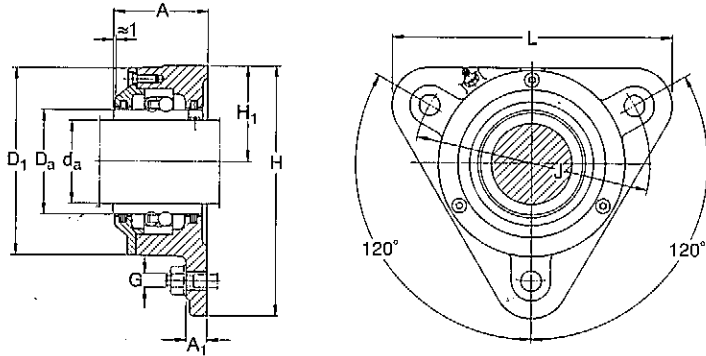
Size designation:



e.g. 13



**I-1200(00) flanged housings  
for self-aligning ball bearings  
with extended inner ring**  
d<sub>a</sub> 20–60 mm



Shaft diameter d <sub>a</sub>	Housing Dimensions			H	H <sub>1</sub>	J	L	G	Mass kg	Designation Housing of grey cast iron with felt seals	
	A	A <sub>1</sub>	D <sub>a</sub>								
20	42	10	28,9	69	92,5	35	90	105	10	0,80	I-120013 E
25	46	10	33,3	75	100	38	96	110	10	1,00	I-120014
30	50	12	40,1	86	117	44	116	130	10	1,40	I-120015
35	54	12	47	97	130	48,5	130	145	12	1,80	I-120016 E
40	60	12	54	108	143	54	140	160	12	2,30	I-120017
45	62	12	57,7	113	160	60	160	180	12	3,30	I-120018
50	63	15	61,7	118	160	60	160	180	12	3,60	I-120019 E
60	67	15	78	142	189	72	180	210	12	4,20	I-120021

Shaft diameter d <sub>a</sub>	Appropriate bearing	Separate components Felt strip <sup>1)</sup>	End cover bolts (3 bolts)	Grease quantity Initial fill kg
20	11204 E	FS 180	M 5 × 16	0,007
25	11205 E	FS 180	M 5 × 16	0,010
30	11206 E	FS 180	M 5 × 16	0,015
35	11207 E	FS 180	M 5 × 16	0,020
40	11208 E	FS 300	M 5 × 16	0,025
45	11209 E	FS 300	M 6 × 20	0,035
50	11210 E	FS 300	M 6 × 20	0,035
60	11212 E	FS 300	M 6 × 20	0,050

To be able to carry the axial load the inner ring must be located by a shoulder on the shaft

<sup>1)</sup> Two strips are supplied with each housing