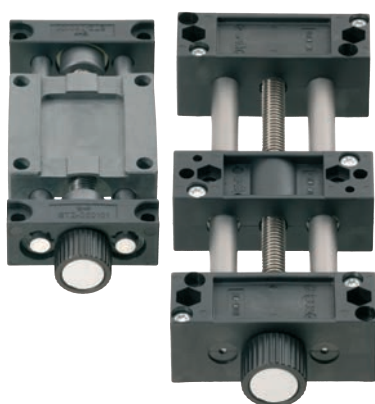


drylin® general drive technology: linear modules “light” SHTP



Completely lubrication-free linear modules

Lightweight

Low priced

Corrosion-resistant

drylin® SHTP | Linear Modules “Light”

The drylin® SHTP series is characterized by the weight reducing use of solid plastic components as shaft end supports and carriages. This inexpensive alternative with many optional accessories is suited for simple motion control tasks, such as sensor motion control.



Shaft blocks from corrosion-resistant,
robust plastic

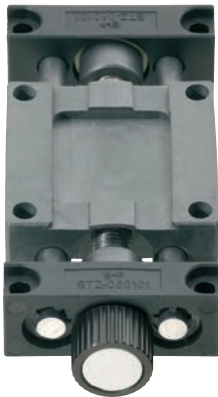
Plastic guide carriages are available with threads
integrated into the housing, and also with
completely lubrication-free drylin® R liners and
drylin® trapezoidal lead screw nuts

3 Shaft materials

lead screws (trapezoidal thread 10x2, metrical
thread M8) made of C15 or stainless steel.

Large range of accessories available ► **page 1065**

SHTP mini – Small and low-cost – Solid plastic

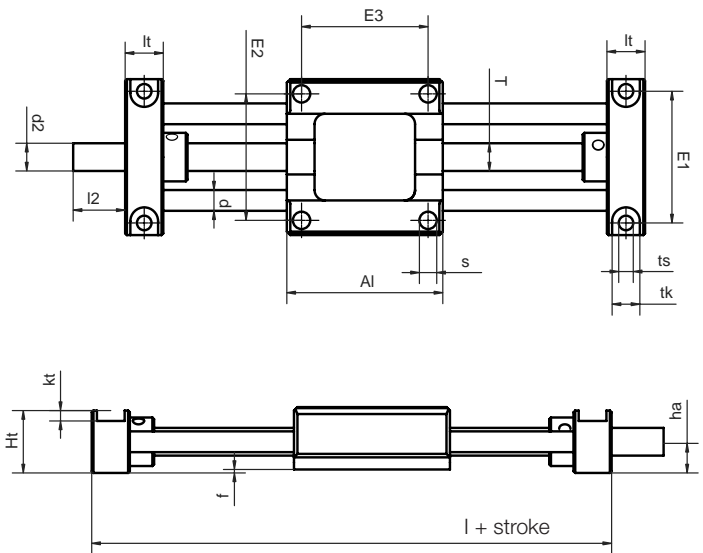
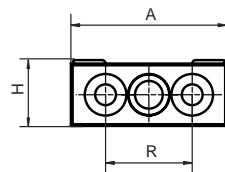


- Miniature version
 - Very low weight
 - Very low price
 - Corrosion resistant
 - Carriages and shaft end supports made of high performance polymers
 - Available accessories
- page 1065



Order key

SHTP-01-06-AWM



Technical Data

Part number	Max. length of stroke [mm]	Aluminum shaft		Max. static load-bearing capacity		more Information
		Weight [kg]	Additional [kg] (per 100 mm)	axial [N]	radial [N]	
SHTP-01-06-AWM	300	0.11	0.06	50	50	Carriage, square, with four symmetrical mounting bores

Dimensions [mm]

Part number	A	Al	H	Ht	E1	E2	E3	I	R	f	kt	lt	tk	ts
SHTP-01-06-AWM	45	45	19	18	38	36.5	36.5	67	25	1	3	11	8	42

Part number	s	d	T	I2	d2*	ha
SHTP-01-06-AWM	5.1	6	M8	15	M8	9

* Standard versions supplied with lead screw end unmachined

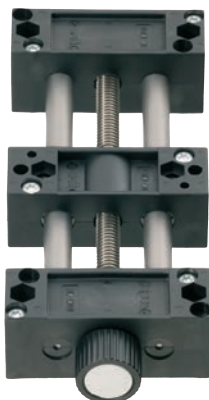


delivery time 2–3 days



prices price list online
www.igus.co.uk/en/drylinSHTP

SHTP – Economical – Solid plastic



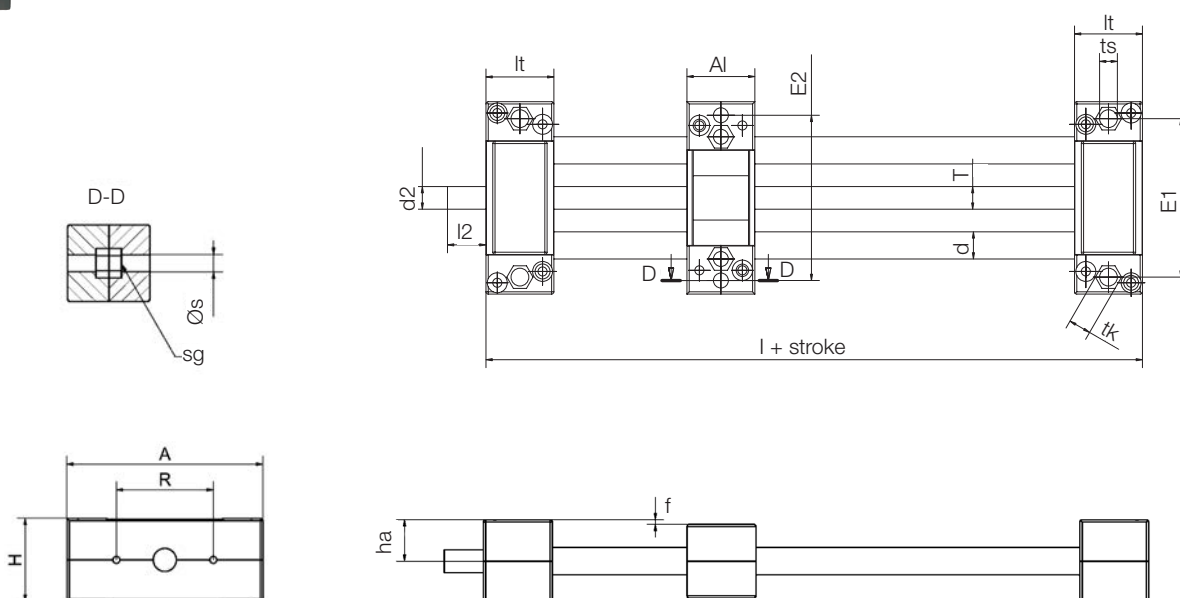
- Solid polymer design
- Low weight
- Cost-effective
- Corrosion-resistant
- Available accessories

► page 1065



Order key

SHTP-01-12-AWM



Technical Data

Part number	Max. stroke [mm]	Aluminum shaft		More Information
		Weight [kg]	Additional [kg] (per 100 mm)	
SHTP-01-12	500	0.35	0.11	Liners and trapezoidal lead screw nut made of iglidur® J
SHTP-02-12	500	0.35	0.11	Bearing and nut integrated into the carriage

Dimensions [mm]

Part number	A	Al	H	E1	E2	I	R	f	lt ±0.1	tk	ts +0.15
SHTP-01-12	85	30	36	70	73	90	42	2	30	10	6.0
SHTP-02-12	85	30	36	70	73	90	42	2	30	10	6.0

Part number	s	sg	d	T	I2	d2*	ha	Max. static load-bearing capacity	
								axial [N]	radial [N]
SHTP-01-12	6.3	M6	12	TR 10 x 2	17	TR 10 x 2	18	200	400
SHTP-02-12	6.3	M6	12	TR 10 x 2	17	TR 10 x 2	18	200	800

* Standard versions supplied with lead screw end unmachined

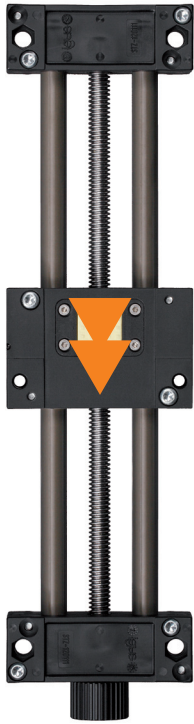


delivery 2–3 days
time



prices price list online
www.igus.co.uk/en/drylinSHTP

SHTP-FF – Fast Forward



SHTP linear tables with quick release mechanism offer a combination of accurate positioning and quick manual adjustment.

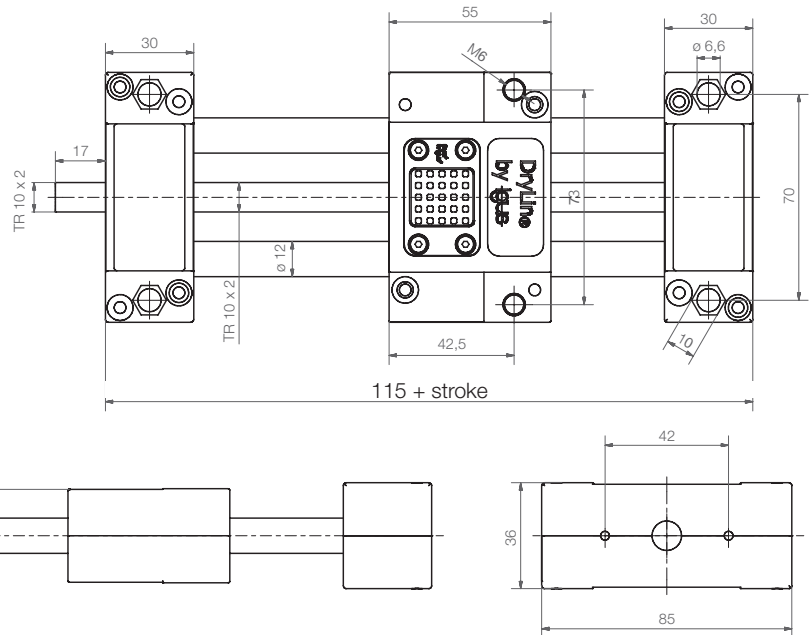
- Light solid polymer model
- For fast format adjustments
- Including self-locking brake
- Variable stroke length
- Only recommended for horizontal applications
- Max. stat. axial load 200 N
- Max. dynamic. axial load 50 N
- Available accessories

► page 1065



Order key

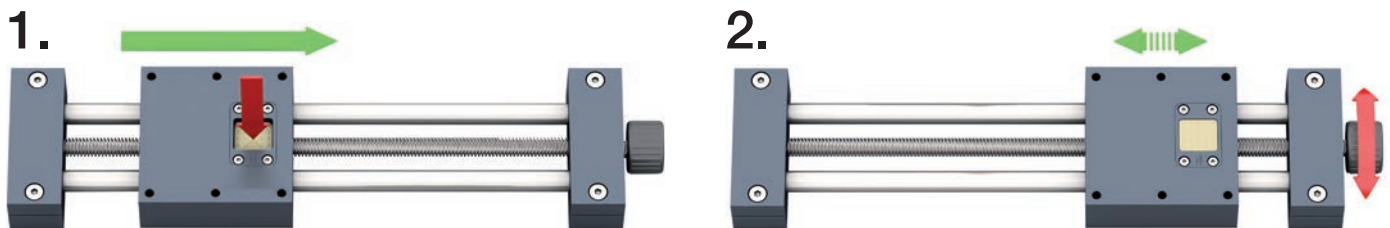
SHTP-01-12-AWM-FF



Technical Data

Part number	Max. length of stroke [mm]	Weight [kg]	Additional Weight (per 100 mm)
SHTP-01-12-AWM-FF*	500	0.35	0.11

* Liners and trapezoidal lead screw nut made of iglidur® J



Press > disengage > move manually > click into place > fine-tune



delivery time 8–14 days



prices price list online
www.igus.co.uk/en/drylinSHTP