

drylin® Specialists



Telescopic guides

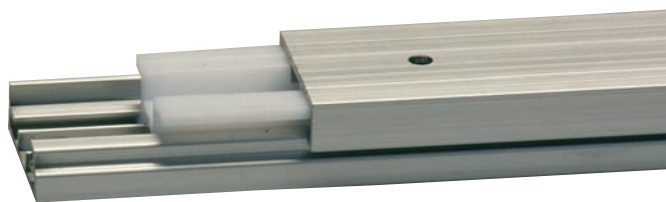
Measuring systems

Roller guides

Square linear guide

Slide disks





drylin® NT Telescopic rails

Lubrication-free solid polymer/aluminum guide for continuous lengths up to 1,200 mm extension.

► **page 987**



drylin® NT Telescopic rails with locking mechanism

The proven drylin® N telescopic system is now available with a locking mechanism.

There are two different versions:

- a) Detent in end and centre positions
- b) Precision detent with variable pitch
(minimum pitch 10 mm)

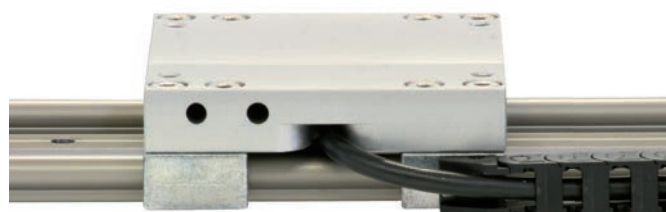
► **page 988**



drylin® WKM Digital measuring systems

The drylin® WKM measuring systems are battery powered. The integrated battery has a life of at least two years. Magnetic tapes fitted as standard. The position value is displayed on a 5-digit LC display.

► **page 989**



drylin® WKMEEX Measuring system

Much less space is required for the latest drylin® WKMEEX measuring device. The sensor head is integrated in the carriage (total height 36 mm). There are three sensor types available, two are compatible with TTL Line Driver. We recommend igus® e-chain® series E2 micro or easy chain® for guiding the signal cable.

► **page 990**

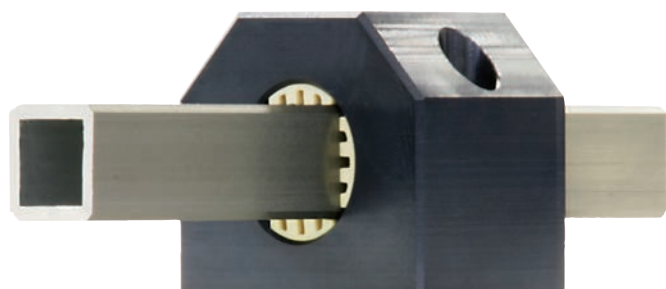


drylin® WJRM Hybrid bearing

An additional drylin® W solution is the combined rolling and sliding carriage.

In the correct orientation the required drive force is reduced by the maintenance free roller bearing.

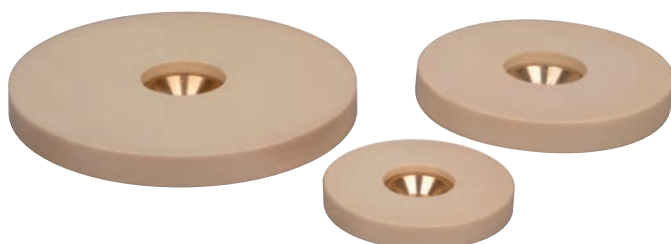
► **page 992**



drylin® Q Torque-resistant square guide

drylin® Q is the new torque resistant linear slide for the spacesaving handling of small parts. Four liners made of iglidur® J run on a hard anodized aluminum square tube. This unit is light weight, compact and 100 % lubrication-free.

► **page 991**



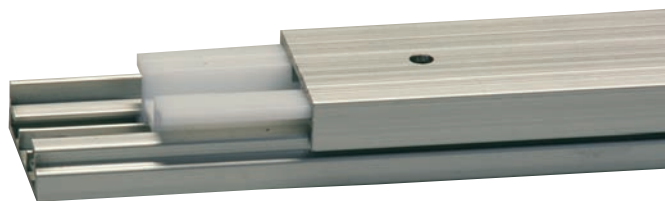
drylin® Round slide disk

The drylin® Slide disks from stock (RSDJ – Round Slide disk) – made from the high performance material iglidur® J have many applications. Without additional lubricant, heavy loads can be moved over a variety of surfaces (steel, aluminum, stainless steel, etc.) with very low friction. The plates are fixed securely with a screw through the reinforced hole in the centre.

► **page 994**

drylin® Telescopic Rails | Product Range

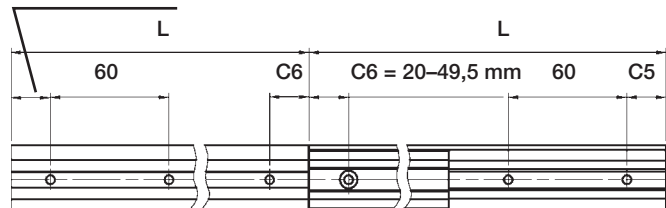
NT-35-“L” Total extension



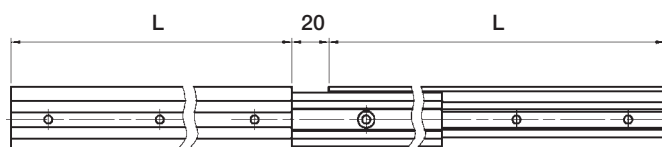
- Solid polymer guide/aluminum guide
- Low weight
- Cost-effective
- Corrosion-resistant
- Continuous lengths up to 1,200 mm (total extension)

NT-35-“L” Total extension

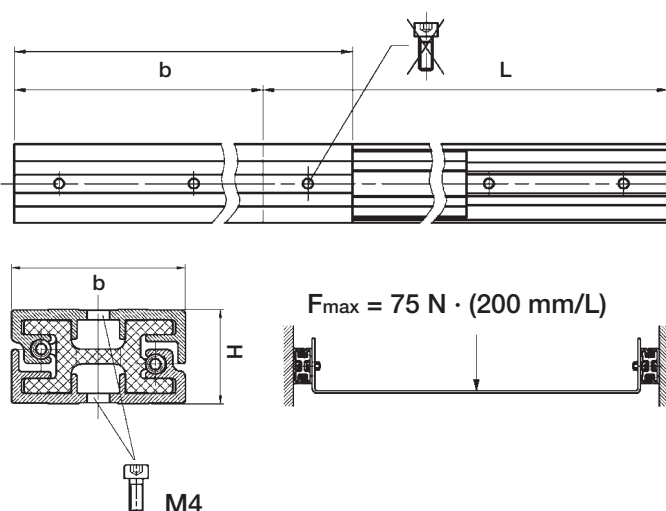
C5 = 20–49.5 mm



NT-35-“L”-“L+20” Over-extension



NT-35-“L”-“B” Partial extension



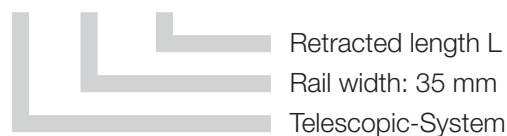
Dimensions [mm]

Part number	b	H	L min.	L max.
NT-35-... mm	35	19	100	600



Order key

NT-35-300

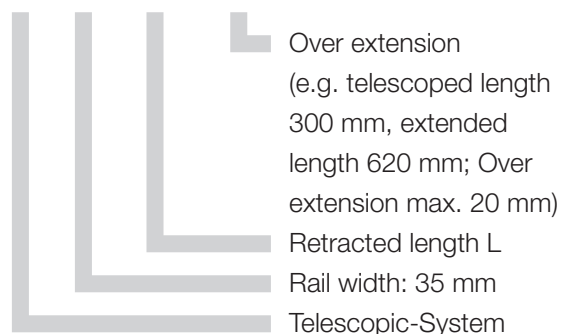


Retracted length L
Rail width: 35 mm
Telescopic-System



Order key

NT-35-300-320

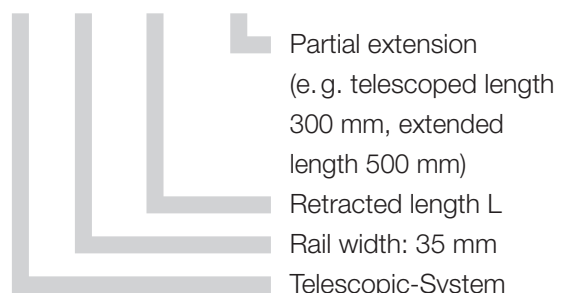


Over extension
(e.g. telescoped length
300 mm, extended
length 620 mm; Over
extension max. 20 mm)
Retracted length L
Rail width: 35 mm
Telescopic-System



Order key

NT-35-300-200



Partial extension
(e.g. telescoped length
300 mm, extended
length 500 mm)
Retracted length L
Rail width: 35 mm
Telescopic-System

Recommendation:

F_{max} calculated using this formula allows an easy manual use. The unit can take higher forces than this, but the required driving force will be correspondingly higher.

With locking mechanism



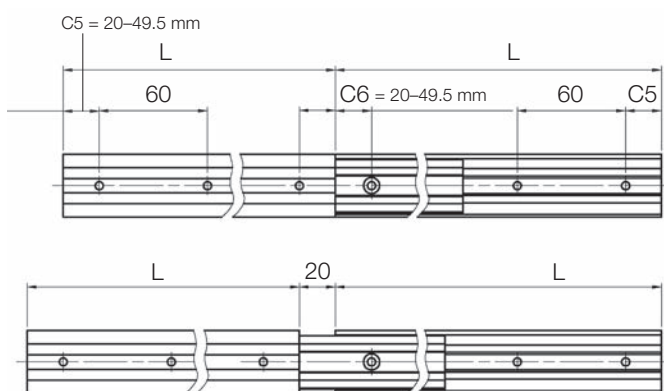
Order key

NT-LM-35-300

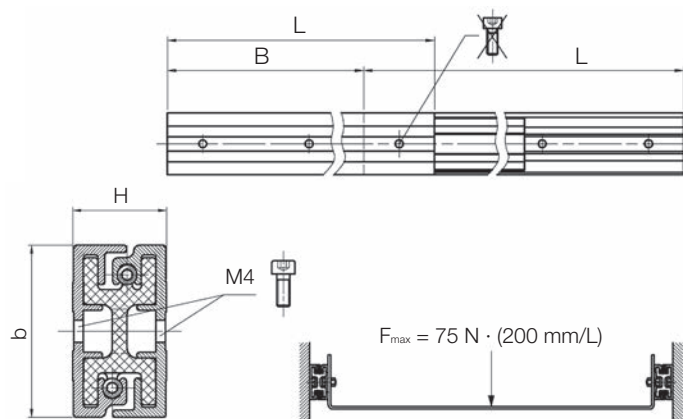
The proven drylin® N telescopic system is now available with a locking mechanism.

There are two different versions:

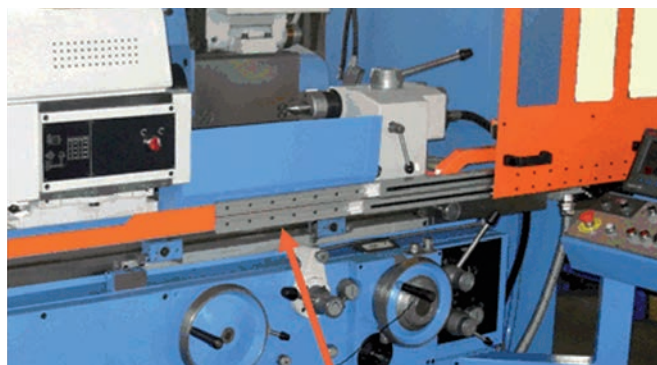
- a) Detent in end and centre positions
- b) Precision detent with variable pitch (minimum pitch 10 mm)



- Solid polymer/aluminum guide
- Low weight, quiet running
- Cost-effective
- Corrosion-resistant, 100 % lubrication-free
- Continuous lengths up to 1,200 mm (extended total length)



drylin® NT LM in adjustment of Perspex guard



drylin® NT LM in guard door adjustment in a machine tool

drylin® Detent in end and centre position at full extension – Dimensions [mm]

Part number	b	H	Lmin	Lmax
NT-LM-35-...mm	35	19	140	600

individual precision detent on request; The length divided by the locking distance must yield an even number.
e.g. Lengths 250 mm, latching all 62,5mm = $250 / 62,5 = 4$



delivery 3–8 days
time



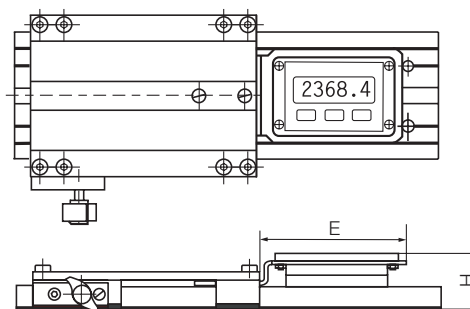
prices price list online
www.igus.co.uk/drylinSpecialists

drylin® Measuring Systems | Product Range

The drylin® WKM measuring systems are battery powered. The integrated battery guarantees two year operating time. An absolute distance measurement is possible. Magnetic tapes fitted as standard. The position value is displayed on a 5-digit LC display.

- Measuring principle: magnetic with magnetic tape (10 · 1.4 mm)
- Resolution: 0.1 mm
- Accuracy: $\pm(0.1 + 0.01 \cdot \text{measured length [m]})$ mm
- Service life: over 5 years at 100 % switch-on time
- Application temperature: +0 to +60 °C
- Display: LCD
- Repeat accuracy: ± 1 Digit
- Absolute and incremental measuring method
- Flexible and mobile use
- Variable zero point
- Carriage can be clamped
- Display optionally right (R) or left (L) of guide carriage
- Max. rail length 4,000 mm (Effective measurement max. 3,757 mm)

Type WKM-10 and -20



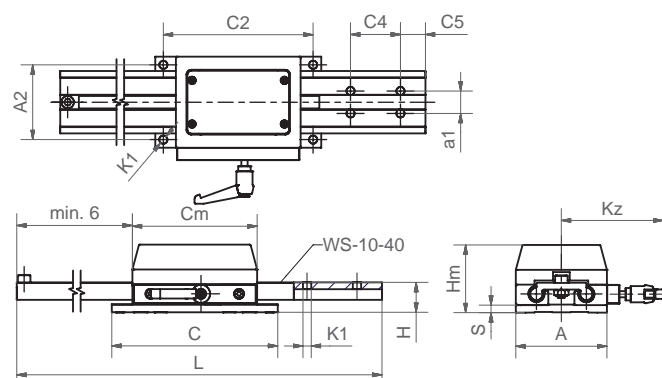
For the series 10 and 20 the rails are fixed and the measuring carriage moves.

Dimensions [mm]

Part number	drylin® linear guide	H	E
WKM-10-80-15-01-L	WK-10-80-15-01*	36	93
WKM-10-80-15-01-R	WK-10-80-15-01*	36	93
WKM-20-80-15-01-L	WK-20-80-15-01*	40	93
WKM-20-80-15-01-R	WK-20-80-15-01*	40	93

* Dimensions rail/slide ► drylin® W chapter, page 835

Type WKM-11

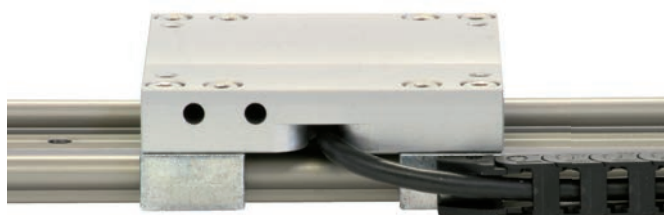


For the series 11, the carriage is fixed with 4 screws. The rail moves, the end of the rail is the fixed point.

Dimensions [mm]

Part number	L	C4	C5	a1	C2	A2	K1	C	A	H	S	Cm	Hm	kz
	max.													
WKM-11-40	2,000	40	20	18	120	60	6.6	133	73	24	6	100	54	82

Measuring-system with external signal output



Much less space is required for the latest drylin® WKMEX measuring device. The sensor head is integrated in the carriage (total height 36 mm). There are three sensor types available, two are compatible with TTL Line Driver. We recommend igus® e-chain® series E2 micro or easy chain® for guiding the signal cable.

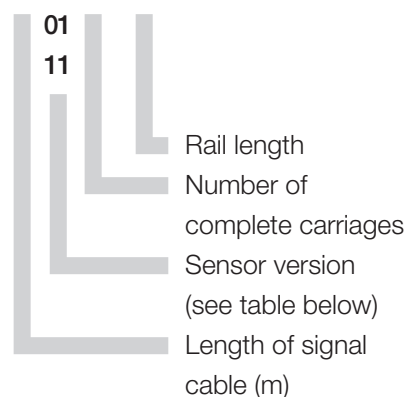
- www.igus.co.uk/en/e2micro
- www.igus.co.uk/en/easychain

- Ready-to-fit measuring device for external signal output
- With 4 edge trigger mode (setting parameters of the display or control, for example, IW4) and +20 °C ambient temperature: Resolution: $\pm(0.025 + 0.02 \cdot L)$ L = measuring length in metres; Repeatability: ± 0.025 mm
- With 1 edge trigger mode (setting parameters of the display or control, for example, IW1) and +20 °C ambient temperature: Resolution: $\pm(0.1 + 0.02 \cdot L)$ L = measuring length in metres; Repeatability: ± 0.025 mm
- Small sensor with integrated evaluation unit

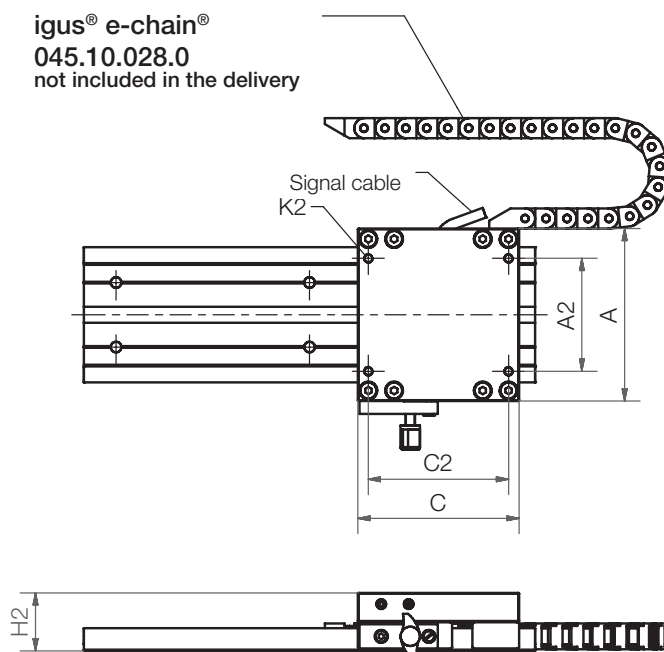


Order key

WKMEX-10-80-10-2,5-00-01-1500



igus® e-chain®
045.10.028.0
not included in the delivery



Dimensions [mm]

Part number	H2	C	C2	A	A2	K2	Resolution
WKMEX-10-80	36	100	87	107	70	M6	0.1

Varianten

Sensor type	Nominal voltage	Output power	Max. length of signal cable
00	10–30 V	10–30 V	30 m
01	10–30 V	TTL Line Driver	50 m
11	5 V	TTL Line Driver	10 m



delivery from stock
time



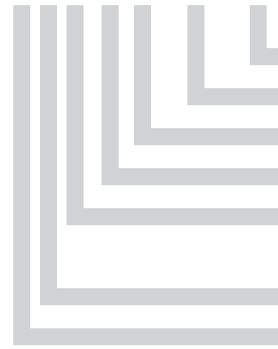
prices price list online
www.igus.co.uk/drylinSpecialists

Torque-resistant square guide

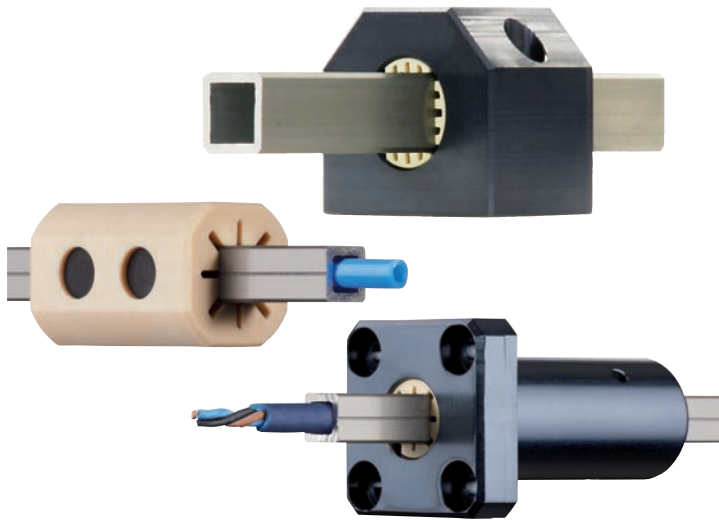


Order key

QJRM(T)-05-20

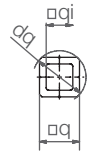


Dimension across flats
Pillow block, short
Tandem (optional)
Metric
Form of Housing, closed
igidur® J bearings
Square design

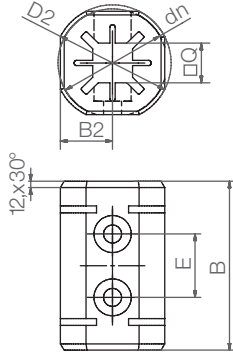
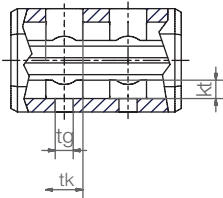


- Square section tube made of hard-anodized aluminum
- Torque resistant without second rail
- Tolerates moments up to 3 Nm (Size10), 10 Nm (size 20)
- Space saving and low weight
- Cable guidance possible in tube

AWMQ

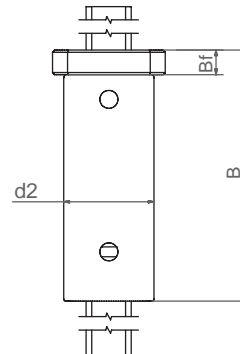
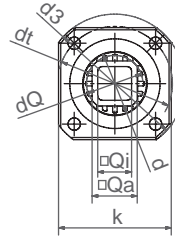


New: QJRM(T)-01-10

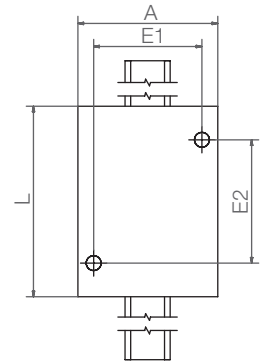
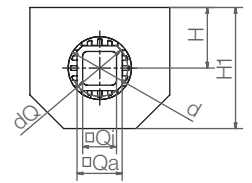


drylin® Q-20

QJFM(T)



QJRM(T)



Dimensions [mm]

Part number	Weight	q	dq	qi
drylin® Q rail profile	[kg/m]			±0,02
AWMQ-10	New! 0.082	7.5	10	5
AWMQ-20	0.46	20	25	15

Part number	Weight	M max.	B	B2	D2	dn	E	Q	tk	tg	kt
Q10-Housing Bearing	[g]	[Nm]									
QJRM(T)-01-10	New! 11.3	3	32	9.8	22	22	12	7.5	6	3.4	3.5

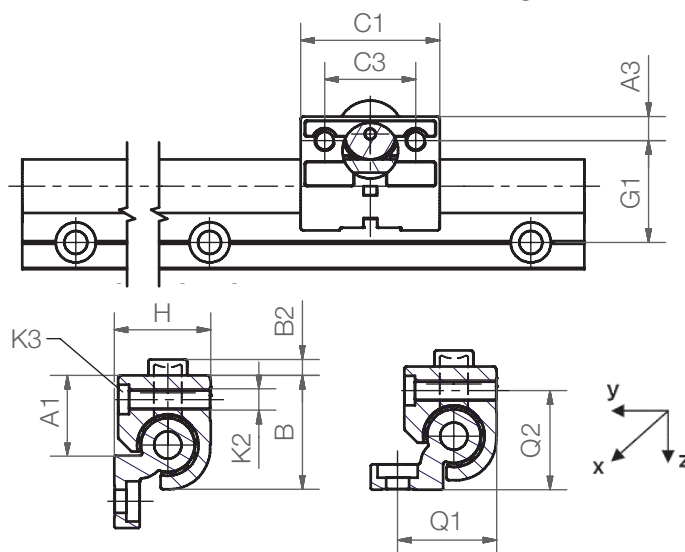
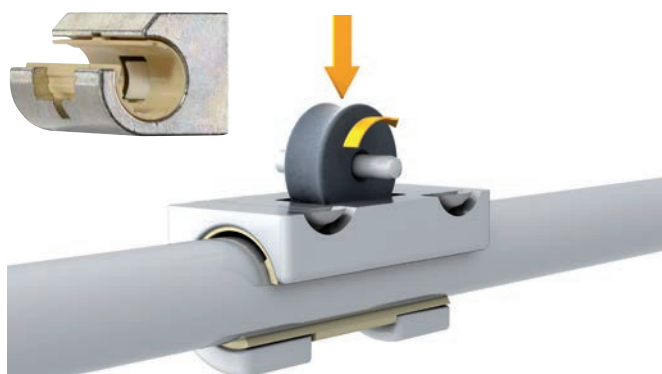
Part number	Weight	A	H	H1	dQ	Qa	Qi	E1	E2	d	L
Q20-Housing Bearing	[kg]		±0,02					±0,15	±0,15		
QJRM(T)-05-20	0.55	62	27	54	25	20	15	48	55	28	85
QJRM-05-20	0.25	62	27	54	25	20	15	48	—	28	40

Articolo	Weight	k	d2	Bf	dQ	Qa	Qi	d3	dt	d	B
drylin® Q Flange Bearing	[kg]		h7					±0,15	±0,15		
QJFMT-02-10	New! 0.038	30	19	9	10	7,5	5	39	29	12	52
QJFMT-01-20	0.24	50	40	11	25	20	15	62	51	28	112
QJFMT-02-20	0.24	50	40	11	25	20	15	62	51	28	112
QJFM-02-20	0.14	50	40	11	25	20	15	62	51	28	58

Hybrid bearing – roll and slide

drylin® W hybrid bearings offer a unique combination of plain and roller bearings. When used in the correct orientation, the driving force requirements are significantly reduced by the maintenance free roller. The shear forces and any shock loads are supported by the plain self lubricating liner. The drylin® hybrid bearing is ideal for applications which involve manual drive, such as in a machine guard door.

- Solid tribo-polymer rollers
- Liner made of iglidur® J
- Low drive force needed
- Friction: 0.04–0.05 μ
- Cost-effective
- Can be combined with 7 linear profile rails



This orientation is not possible for combination of WJRM-01-10 with rail WS-10/WS-10-40/WS-10-80

drylin® W Hybrid Housing Bearing, Round – Load Data and Dimensions [mm]

Part number	Static load capacity Co	Dyn. load capacity Cz+ at total running distance (km)				F · v max. [N · m/s]
		10	100	200		
	[N]	[N]	[N]	[N]		
WJRM-01-10	250	250	90	50		50
WJRM-01-16	400	400	140	70		80
WJRM-01-20	550	550	200	100		80

drylin® W Hybrid Housing Bearing, Round – Load Data and Dimensions [mm]

Part number	Friction in +z direction	Weight [g]	A1	A3	B	B2	C1	C3	G1	H	K2	K3	Q1	Q2
WJRM-01-10	< 0.1	46	16.5	6.5	26	2,5	35	22	27	18	M6	M5	–	–
WJRM-01-16	< 0.1	131	25	9	34.5	5	48	30	33	27	M8	M6	32	28
WJRM-01-20	< 0.1	232	30	9	42.5	6	52	34	38	36	M8	M6	37	37



drylin® W guide rail ► page 835



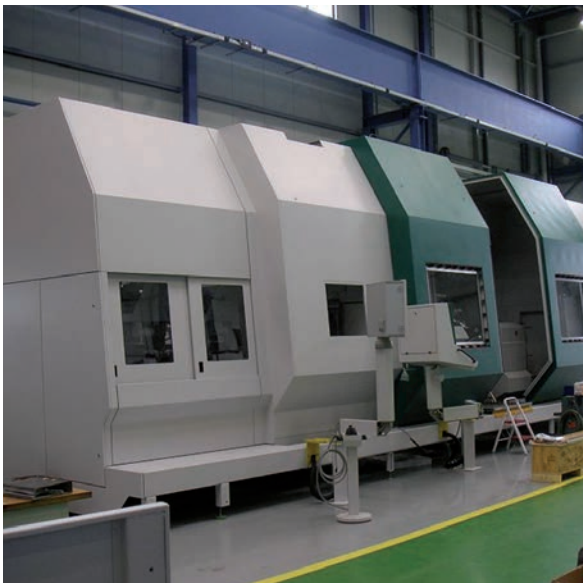
delivery
time from stock



prices price list online
www.igus.co.uk/drylinSpecialists



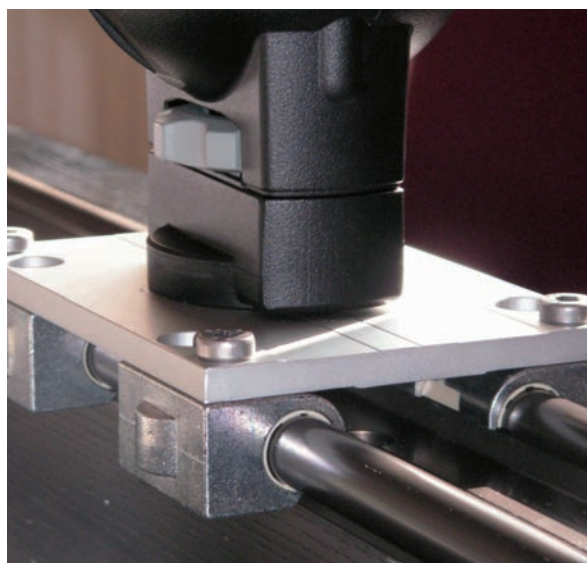
Adjustment of control panel unit



Machine tool guard door



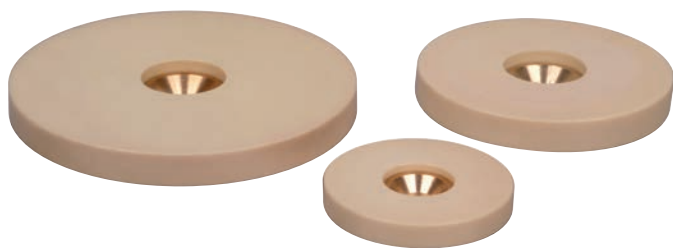
Adjustment of wood panel



Adjustment of camera mounting slide

► www.igus.co.uk/camera

drylin® round slide disk

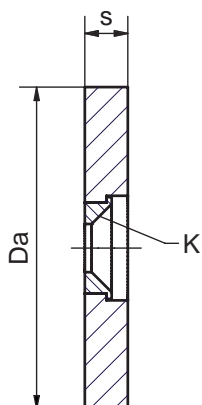
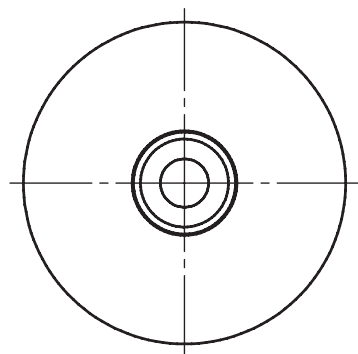


Order key

RSDJ-40-06

Material:

igidur® J ► page 93



The drylin® slide disks from stock (RSD = Round Slide Disk) made of high performance material iglidur® J have many different applications. Without additional lubricant, heavy loads can be moved over a variety of surfaces (steel, aluminum, stainless steel, etc.) with very low friction. The plates are fixed securely with a screw through the reinforced hole in the centre.

Dimensions [mm]

Part number	Outer-Ø Da	Wear limit	Width s	For countersunk screw K	Max. static load capacity [N]
RSDJ-40-06	40	1.5	6 ± 0.05	M6	28,500
RSDJ-60-08	60	2.5	8 ± 0.05	M8	66,000
RSDJ-80-08	80	2.5	8 ± 0.05	M8	120,000



Please use our different bar stock dimensions for your individual design ► page 609



delivery
time from stock



prices price list online
www.igus.co.uk/drylinSpecialists