

NON SELF OILING PLUMMER BLOCKS

Non-Self-Oiling plummer blocks, 1 1/2 & 2 diameters through B.S. and Engineers series.

Cap Bolts

Sizes 1" to 4 1/2" have 2 cap bolts, sizes 5 to 8 have 4.

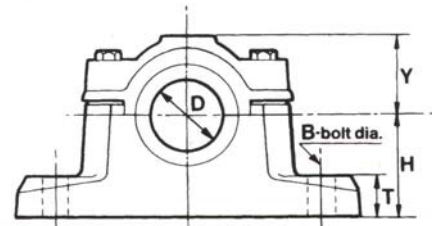
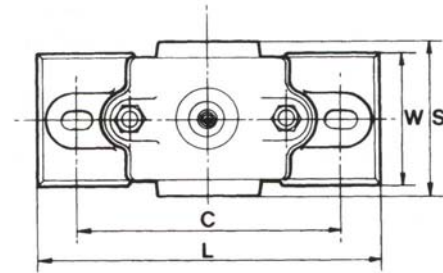
Holding Down Bolts Sizes

1" to 5 1/2" have 2 HD bolts, sizes 6" to 8" have 4.

Grease nipples supplied.

Horizontal Pattern 1 1/2 and 2 diameters through (dimension S). These Plummer Blocks are fitted with gunmetal bearings made in halves. The lubricant is fed through grooves direct to the bearing surfaces, ensuring efficient lubrication without loss. On sizes up to and including 4" diameter bore the top half of each bearing has a nipple projection drilled and tapped to receive oil or grease lubricator. On sizes 4 1/2" and above the gunmetal bearings are prevented from rotating by snugs at one side, both halves being alike, the cap is drilled and tapped to receive oil or grease lubricator. Prices on application.

NOTE: These units were originally made to inch dimensions. The same castings are used for imperial & metric sizes and the 1 1/2 times' and '2 times' rule applies only to the inch dimensions. Therefore, the distances through the metric bores are 1 1/2 or 2 times the inch sizes



D		ORDER REF		DIMENSIONS INCHES										WEIGHT (Kgs)		BSP GREASE NIPPLE
				MM (<i>In Italics</i>)										1 1/2 Dia	2 Dia	
				L	C	CROSS CENTRES WHEN S IS		H	Y	W WHEN S IS		T	B (MM)			
1 1/2 Dia	2 Dia	1 1/2 Dia	2 Dia													
1	25	NS16E1	NS16E2	6 1/4	4 1/4			1 1/4	1 1/4	1 1/4	1 1/4	3/4	M10	1.2	1.7	1/8"
		<i>NS25M1</i>	<i>NS25M2</i>	<i>160</i>	<i>120</i>			<i>44.5</i>	<i>30</i>	<i>30</i>	<i>45</i>	<i>19</i>				
1 1/4	30	NS20E1	NS20E2	7	5 1/8			2	1 7/16	1 1/2	2 1/8	3/4	M10	1.8	2.3	
		<i>NS30M1</i>	<i>NS30M2</i>	<i>180</i>	<i>140</i>			<i>50.8</i>	<i>35</i>	<i>40</i>	<i>55</i>	<i>19</i>				
1 1/2	40	NS24E1	NS24E2	8 1/4	6 1/4			2 1/4	1 1/4	1 3/4	2 1/2	7/16	M12	2.8	4.2	
		<i>NS40M1</i>	<i>NS40M2</i>	<i>210</i>	<i>160</i>			<i>57.2</i>	<i>40</i>	<i>45</i>	<i>65</i>					
1 3/4	45	NS28E1	NS28E2	9	7			2 1/2	1 7/8	2	2 1/4	7/8	M12	4.5	5.5	
		<i>NS45M1</i>	<i>NS45M2</i>	<i>230</i>	<i>180</i>			<i>63.5</i>	<i>48</i>	<i>50</i>	<i>70</i>	<i>22</i>				
2	50	NS32E1	NS32E2	10 1/4	7 3/4			2 3/4	2 1/4	2 1/4	3 1/4	1	M16	5.8	8	
		<i>NS50M1</i>	<i>NS50M2</i>	<i>260</i>	<i>195</i>			<i>69.9</i>	<i>55</i>	<i>55</i>	<i>85</i>	<i>25</i>				
2 1/4	55	NS36E1	NS36E2	10 1/2	8 1/4			3	2 1/2	2 1/2	3 3/4	1 1/4	M16	903	9.5	
		<i>NS55M1</i>	<i>NS55M2</i>	<i>265</i>	<i>210</i>			<i>76.2</i>	<i>60</i>	<i>65</i>	<i>90</i>	<i>30</i>				
2 1/2	60	NS40E1	NS40E2	12	9 1/4			3 1/4	2 9/16	3	4	1 1/4	M20	11	14	
		<i>NS60M1</i>	<i>NS60M2</i>	<i>305</i>	<i>235</i>			<i>82.6</i>	<i>65</i>	<i>75</i>	<i>100</i>	<i>30</i>				
2 3/4	70	NS44E1	NS44E2	12 3/4	10			3 1/2	2 13/16	3 1/4	4 3/8	1 1/4	M20	13	17.5	
		<i>NS70M1</i>	<i>NS70M2</i>	<i>325</i>	<i>255</i>			<i>88.9</i>	<i>70</i>	<i>85</i>	<i>110</i>	<i>35</i>				
3	75	NS48E1	NS48E2	13 3/4	11			4	3 1/16	3 1/2	5	1 1/2	M20	19	20	
		<i>NS75M1</i>	<i>NS75M2</i>	<i>350</i>	<i>280</i>			<i>101.6</i>	<i>80</i>	<i>90</i>	<i>125</i>	<i>40</i>				
3 1/4	80	NS52E1	NS52E2	14 3/4	11 1/2			4 1/4	3 5/16	3 3/4	5 3/8	1 1/4	M20	21	30	
		<i>NS80M1</i>	<i>NS80M2</i>	<i>375</i>	<i>290</i>			<i>108</i>	<i>85</i>	<i>95</i>	<i>135</i>	<i>40</i>				
3 1/2	90	NS56E1	NS56E2	15 1/2	12			4 1/2	3 3/16	4	5 3/4	1 1/4	M20	24.5	36	
		<i>NS90M1</i>	<i>NS90M2</i>	<i>395</i>	<i>305</i>			<i>114.3</i>	<i>90</i>	<i>100</i>	<i>145</i>	<i>45</i>				
4	95	NS64E1	NS64E2	17 1/4	13 1/2			5 1/2	4 3/16	4 1/2	6 1/2	2	M24	35	50	
		<i>NS95M1</i>	<i>NS95M2</i>	<i>440</i>	<i>345</i>			<i>127</i>	<i>105</i>	<i>115</i>	<i>165</i>	<i>50</i>				
4 1/2	110	NS72E1	NS72E2	19 3/4	15 1/2			5 1/2	4 1/2	5 1/4	7 1/4	2 1/4	M30	52	71	
		<i>NS110M1</i>	<i>NS110M2</i>	<i>500</i>	<i>395</i>			<i>139.7</i>	<i>115</i>	<i>135</i>	<i>185</i>	<i>55</i>				
5	125	NS80E1	NS80E2	20 1/2	16			6	5	6	8 1/4	2 1/2	M30	70	91	
		<i>NS125M1</i>	<i>NS125M2</i>	<i>520</i>	<i>405</i>			<i>152.4</i>	<i>125</i>	<i>150</i>	<i>210</i>	<i>60</i>				
5 1/2	140	NS88E1	NS88E2	22 1/4	17 1/2			6 1/2	5 1/4	6 1/2	8 3/4	2 1/2	M30	90	114	
		<i>NS140M1</i>	<i>NS140M2</i>	<i>565</i>	<i>445</i>			<i>165.1</i>	<i>135</i>	<i>165</i>	<i>225</i>	<i>65</i>				
6	150	NS96E1	NS96E2	24	18 1/2	3 1/4	5	7	5 3/4	7	9 1/4	2 3/4	M30	110	144	
		<i>NS150M1</i>	<i>NS150M2</i>	<i>610</i>	<i>470</i>	<i>90</i>	<i>125</i>	<i>177.8</i>	<i>146</i>	<i>180</i>	<i>240</i>	<i>65</i>				
6 1/2	160	NS104E1	NS104E2	27	21	3 3/4	5 1/2	7 1/2	6 1/2	7 3/4	10 1/2	3	M30	150	192	
		<i>NS160M1</i>	<i>NS160M2</i>	<i>685</i>	<i>535</i>	<i>95</i>	<i>140</i>	<i>190.5</i>	<i>165</i>	<i>195</i>	<i>265</i>	<i>75</i>				
7	180	NS112E1	NS112E2	28	22	4	5 3/4	8	7 3/4	8	11 1/4	3 1/4	M30	175	232	
		<i>NS180E1</i>	<i>NS180E2</i>	<i>710</i>	<i>560</i>	<i>100</i>	<i>145</i>	<i>203.2</i>	<i>190</i>	<i>205</i>	<i>290</i>	<i>80</i>				
7 1/2	190	NS120E1	NS120E2	30	23 1/2	4 1/4	6	8 1/2	7 1/4	8 1/2	12 1/4	3 1/4	M36	205	280	
		<i>NS190M1</i>	<i>NS190M2</i>	<i>760</i>	<i>592</i>	<i>110</i>	<i>150</i>	<i>215.9</i>	<i>195</i>	<i>215</i>	<i>310</i>	<i>85</i>				
8	200	NS128E1	NS128E2	32	25	4 1/2	6 1/2	9	8 1/4	9 1/4	13 1/4	3 1/2	M36	245	343	
		<i>NS200M1</i>	<i>NS200M2</i>	<i>810</i>	<i>635</i>	<i>115</i>	<i>165</i>	<i>228.6</i>	<i>205</i>	<i>235</i>	<i>335</i>	<i>90</i>				

Customised versions of these units can be supplied - Specials made to order.