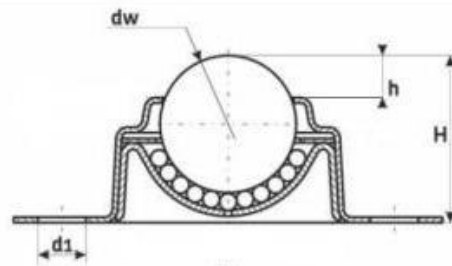
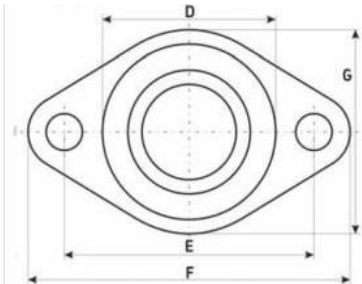


Special series

Standard features

Shell and housing in pressed steel with zinc platin



Available models

Carbon steel balls

Version I : Stainless steel balls

Version D : Load ball in polyacetal (POM)



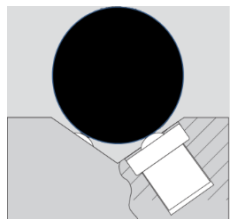
BALL TRANSFER UNITS

Type	CGR REF No.	Load (daN)	Dimensions in mm							Weight (g)	
			∅ Bille Dw	∅ D	∅ d1	F	E	G	H		h
BPT 25,4	0.996651	55									30
BPT 25,4 I		43	25,4	46,2	9	80	62	50	31	7.8	
BPT 25,4 D		8									

Uses :

In Mechanical Engineering

For all smooth, linear assembly and manufacturing operations. Feeder tables for metal machining, drill stands, die-stamping, tool changing etc. Delivery mechanisms for steel banding machines. Ideal for machining tables, automated workpiece mounting tables and in conveyor units for heavy mechanical work.

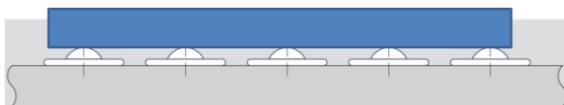
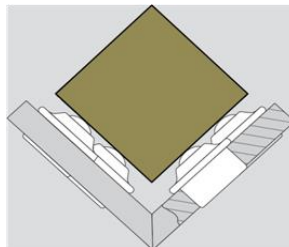


In Handling and Delivery Systems

Such as ball tables, turntable units as well as crossing points in conveyor equipment. BTU's are used at airports for cargo and baggage handling as well as for parcel / package sorting systems. BTU's enable the precise and smooth manoeuvring of sheet metals and tubing.

Our BTU's are also used by :

Airplane equipment manufacturers, nuclear reactor constructors and the food-processing and building materials industries.



CGR's Ball units provide effortless, multi-directional load transfer. Our products move whatever you want, exactly where you want it.



www.cgrroulements.com

11 rue Edouard Branly, F-95220 Herblay

Tel: +33 (0)1 34 18 96 96 - Fax: +33 (0)1 30 40 95 96

